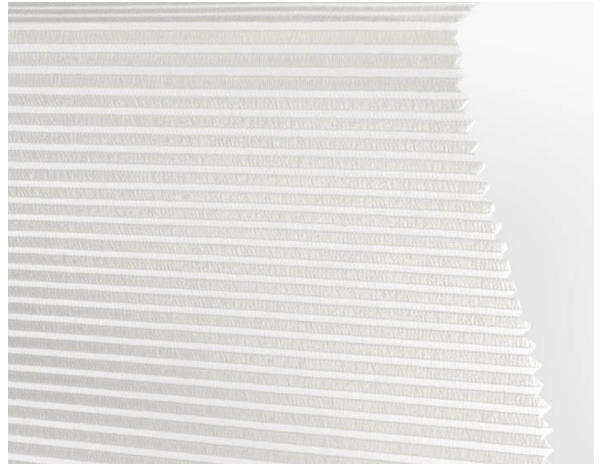


## Tratto F.R. / Ref. TX/3741/01

### RECURSOS

|                          |  |
|--------------------------|--|
| Width cm                 | 300  |
| Thickness                | 0,34   |
| Weight g/m2              | 118  |
| Openess_Factor           | 29   |
| Solar_Trasmision         | 59   |
| Solar_Reflection         | 39   |
| Solar_Absorption         | 2  |
| Light_Transmission       | 59   |
| Light_Absorption         | 40   |
| GtotInt                  | 0,48   |
| UV_Reduction             | 58   |
| Ref.                     | TX/3741/01   |
| Composition              | 100% PL Trevira CS   |
| F.R. Classification      | Classe 1 (I), M1 (F), B1 (D), BS (GB), NFPA 701 (US), IMO, EN 13773 Class 1 (EU) |
| HealthCertification      | OEKO-TEX, REACH  |
| Transparency             | Transparent  |
| Colour_fastness_to_light | 6  |
| Outdoor                  | No   |
| Sealable                 | No   |
| adjustable               | No   |
| jointed                  | No   |
| IMO                      | IMO  |
| Tone                     | White  |



Rullo

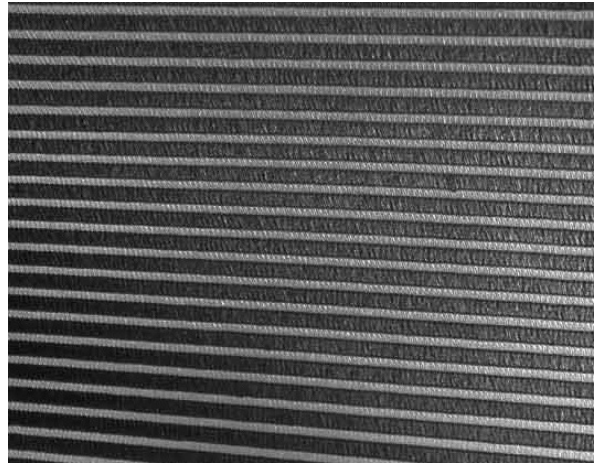


Panels

## Tratto F.R. / Ref. TX/3741/06

### RECURSOS

|                                 |  |
|---------------------------------|--|
| <b>Width cm</b>                 | 300  |
| <b>Thickness</b>                | 0,34   |
| <b>Weight g/m2</b>              | 118  |
| <b>Openess_Factor</b>           | 29   |
| <b>Solar_Trasmision</b>         | 47   |
| <b>Solar_Reflection</b>         | 21   |
| <b>Solar_Absorption</b>         | 32   |
| <b>Light_Transmission</b>       | 32   |
| <b>Light_Absorption</b>         | 24   |
| <b>GtotInt</b>                  | 0,51   |
| <b>UV_Reduction</b>             | 67   |
| <b>Ref.</b>                     | TX/3741/06   |
| <b>Composition</b>              | 100% PL Trevira CS   |
| <b>F.R. Classification</b>      | Classe 1 (I), M1 (F), B1 (D), BS (GB), NFPA 701 (US), IMO, EN 13773 Class 1 (EU) |
| <b>HealthCertification</b>      | OEKO-TEX, REACH  |
| <b>Transparency</b>             | Transparent  |
| <b>Colour_fastness_to_light</b> | 6  |
| <b>Outdoor</b>                  | No   |
| <b>Sealable</b>                 | No   |
| <b>adjustable</b>               | No   |
| <b>jointed</b>                  | No   |
| <b>IMO</b>                      | IMO  |
| <b>Tone</b>                     | Grey/Black   |



Rullo



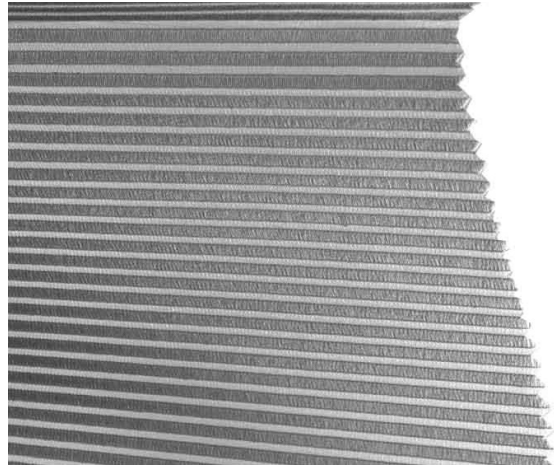
Panels



## Tratto F.R. / Ref. TX/3741/05

### RECURSOS

|                          |  |
|--------------------------|--|
| Width cm                 | 300  |
| Thickness                | 0,34   |
| Weight g/m2              | 118  |
| Openess_Factor           | 29   |
| Solar_Trasmision         | 51   |
| Solar_Reflection         | 21   |
| Solar_Absorption         | 28   |
| Light_Transmission       | 42   |
| Light_Absorption         | 24   |
| GtotInt                  | 0,52   |
| UV_Reduction             | 63   |
| Ref.                     | TX/3741/05   |
| Composition              | 100% PL Trevira CS   |
| F.R. Classification      | Classe 1 (I), M1 (F), B1 (D), BS (GB), NFPA 701 (US), IMO, EN 13773 Class 1 (EU) |
| HealthCertification      | OEKO-TEX, REACH  |
| Transparency             | Transparent  |
| Colour_fastness_to_light | 6  |
| Outdoor                  | No   |
| Sealable                 | No   |
| adjustable               | No   |
| jointed                  | No   |
| IMO                      | IMO  |
| Tone                     | Grey/Black   |



Rullo



Panels



## Tratto F.R. / Ref. TX/3741/04

### RECURSOS

|                          |  |
|--------------------------|--|
| Width cm                 | 300  |
| Thickness                | 0,34   |
| Weight g/m2              | 118  |
| Openess_Factor           | 29   |
| Solar_Trasmision         | 58   |
| Solar_Reflection         | 29   |
| Solar_Absorption         | 13   |
| Light_Transmission       | 52   |
| Light_Absorption         | 32   |
| GtotInt                  | 0,5  |
| UV_Reduction             | 57   |
| Ref.                     | TX/3741/04   |
| Composition              | 100% PL Trevira CS   |
| F.R. Classification      | Classe 1 (I), M1 (F), B1 (D), BS (GB), NFPA 701 (US), IMO, EN 13773 Class 1 (EU) |
| HealthCertification      | OEKO-TEX, REACH  |
| Transparency             | Transparent  |
| Colour_fastness_to_light | 6  |
| Outdoor                  | No   |
| Sealable                 | No   |
| adjustable               | No   |
| jointed                  | No   |
| IMO                      | IMO  |
| Tone                     | Grey/Black   |



Rullo



Panels



## Tratto F.R. / Ref. TX/3741/02

### RECURSOS

|                          |  |
|--------------------------|--|
| Width cm                 | 300  |
| Thickness                | 0,34   |
| Weight g/m2              | 118  |
| Openess_Factor           | 29   |
| Solar_Trasmision         | 61   |
| Solar_Reflection         | 35   |
| Solar_Absorption         | 4  |
| Light_Transmission       | 61   |
| Light_Absorption         | 36   |
| GtotInt                  | 0,49   |
| UV_Reduction             | 55   |
| Ref.                     | TX/3741/02   |
| Composition              | 100% PL Trevira CS   |
| F.R. Classification      | Classe 1 (I), M1 (F), B1 (D), BS (GB), NFPA 701 (US), IMO, EN 13773 Class 1 (EU) |
| HealthCertification      | OEKO-TEX, REACH  |
| Transparency             | Transparent  |
| Colour_fastness_to_light | 6  |
| Outdoor                  | No   |
| Sealable                 | No   |
| adjustable               | No   |
| jointed                  | No   |
| IMO                      | IMO  |
| Tone                     | Natural  |



Rullo



Panels



## Tratto F.R. / Ref. TX/3741/07

### RECURSOS

|                          |  |
|--------------------------|--|
| Width cm                 | 300  |
| Thickness                | 0,34   |
| Weight g/m2              | 118  |
| Openess_Factor           | 29   |
| Solar_Trasmision         | 54   |
| Solar_Reflection         | 30   |
| Solar_Absorption         | 16   |
| Light_Transmission       | 48   |
| Light_Absorption         | 25   |
| GtotInt                  | 0,5  |
| UV_Reduction             | 61   |
| Ref.                     | TX/3741/07   |
| Composition              | 100% PL Trevira CS   |
| F.R. Classification      | Classe 1 (I), M1 (F), B1 (D), BS (GB), NFPA 701 (US), IMO, EN 13773 Class 1 (EU) |
| HealthCertification      | OEKO-TEX, REACH  |
| Transparency             | Transparent  |
| Colour_fastness_to_light | 6  |
| Outdoor                  | No   |
| Sealable                 | No   |
| adjustable               | No   |
| jointed                  | No   |
| IMO                      | IMO  |
| Tone                     | Beige  |



Rullo



Panels