

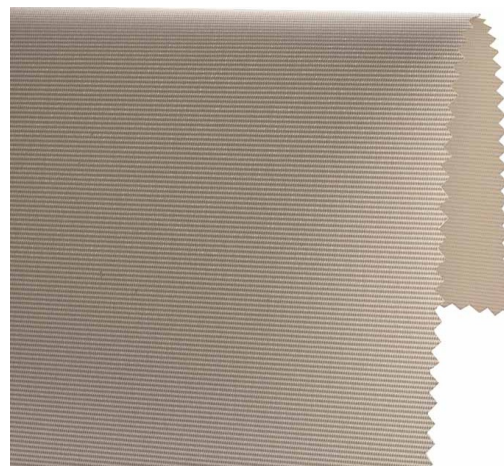


Ecosscreen F.R. / Art.

EC/004

CARACTÉRISTIQUES

| | |
|------------------------------|--|
| Width cm | 270 |
| Thickness | 0,41 |
| Weight g/m2 | 230 |
| Openess_Factor | 1 |
| Solar_Trasmission | 18 |
| Solar_Reflection | 50 |
| Solar_Absorption | 32 |
| Light_Transmission | 11 |
| Light_Absorption | 45 |
| GtotInt | 0,25 |
| UV_Reduction | 99 |
| Sound_Absorption | 0,6 |
| Ref. | EC/004 |
| Composition | 100% RECYCLED PET |
| F.R. Classification | Classe 1 (I), M1(F), B1(D),NFPA 701(US) |
| HealthCertification | CRADLE TO CRADLE, GREENGUARD GOLD |
| Transparency | Dimout |
| Colour_fastness_ to_light | 6/8 |
| Outdoor | No |
| Sealable | No |
| adjustable | No |
| jointed | No |
| IMO | IMO |
| Tone | Beige |
| Warp_daN5cm | 114 |
| Weft_daN5cm | 127 |



Rullo



Verticali



Panels

Ecosscreen F.R. / Art.

EC/005

CARACTÉRISTIQUES

| | |
|------------------------------|--|
| Width cm | 270 |
| Thickness | 0,41 |
| Weight g/m2 | 230 |
| Openess_Factor | 1 |
| Solar_Trasmission | 8 |
| Solar_Reflection | 31 |
| Solar_Absorption | 61 |
| Light_Transmission | 6 |
| Light_Absorption | 31 |
| GtotInt | 0,42 |
| UV_Reduction | 99 |
| Sound_Absorption | 0,6 |
| Ref. | EC/005 |
| Composition | 100% RECYCLED PET |
| F.R. Classification | Classe 1 (I), M1(F), B1(D),NFPA 701(US) |
| HealthCertification | CRADLE TO CRADLE, GREENGUARD GOLD |
| Transparency | Dimout |
| Colour_fastness_ to_light | 6/8 |
| Outdoor | No |
| Sealable | No |
| adjustable | No |
| jointed | No |
| IMO | IMO |
| Tone | Grey/Black |
| Warp_daN5cm | 114 |
| Weft_daN5cm | 127 |



Rullo



Verticali



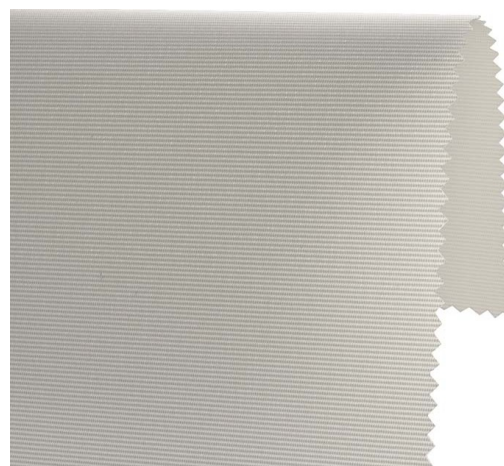
Panels

Ecosscreen F.R. / Art.

EC/003

CARACTÉRISTIQUES

| | |
|--------------------------|---|
| Width cm | 270 |
| Thickness | 0,41 |
| Weight g/m2 | 230 |
| Openess_Factor | 1 |
| Solar_Trasmission | 21 |
| Solar_Reflection | 59 |
| Solar_Absorption | 20 |
| Light_Transmission | 18 |
| Light_Absorption | 60 |
| GtotInt | 0,35 |
| UV_Reduction | 99 |
| Sound_Absorption | 0,6 |
| Ref. | EC/003 |
| Composition | 100% RECYCLED PET |
| F.R. Classification | Classe 1 (I), M1(F), B1(D),NFPA 701(US) |
| HealthCertification | CRADLE TO CRADLE, GREENGUARD GOLD |
| Transparency | Dimout |
| Colour_fastness_to_light | 6/8 |
| Outdoor | No |
| Sealable | No |
| adjustable | No |
| jointed | No |
| IMO | IMO |
| Tone | Grey/Black |
| Warp_daN5cm | 114 |
| Weft_daN5cm | 127 |



Rullo



Verticali



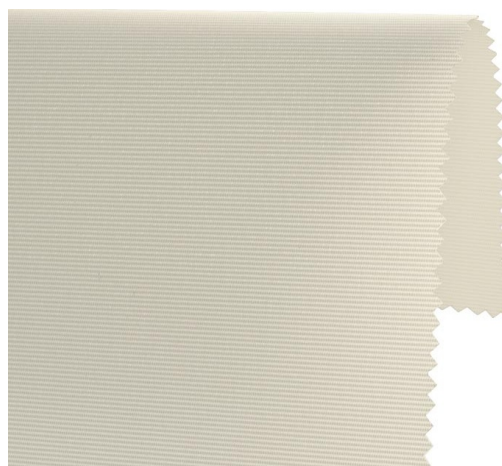
Panels

Ecosscreen F.R. / Art.

EC/002

CARACTÉRISTIQUES

| | |
|------------------------------|--|
| Width cm | 270 |
| Thickness | 0,41 |
| Weight g/m2 | 230 |
| Openess_Factor | 1 |
| Solar_Trasmission | 25 |
| Solar_Reflection | 61 |
| Solar_Absorption | 14 |
| Light_Transmission | 23 |
| Light_Absorption | 66 |
| GtotInt | 0,34 |
| UV_Reduction | 98 |
| Sound_Absorption | 0,6 |
| Ref. | EC/002 |
| Composition | 100% RECYCLED PET |
| F.R. Classification | Classe 1 (I), M1(F), B1(D),NFPA 701(US) |
| HealthCertification | CRADLE TO CRADLE, GREENGUARD GOLD |
| Transparency | Dimout |
| Colour_fastness_ to_light | 6/8 |
| Outdoor | No |
| Sealable | No |
| adjustable | No |
| jointed | No |
| IMO | IMO |
| Tone | Natural |
| Warp_daN5cm | 114 |
| Weft_daN5cm | 127 |



Rullo



Verticali



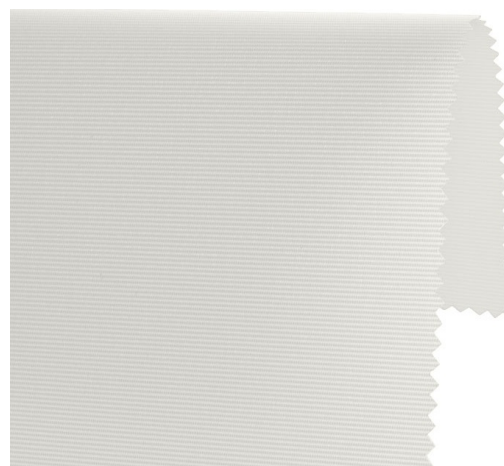
Panels

Ecosscreen F.R. / Art.

EC/001

CARACTÉRISTIQUES

| | |
|--------------------------|---|
| Width cm | 270 |
| Thickness | 0,41 |
| Weight g/m2 | 230 |
| Openess_Factor | 1 |
| Solar_Trasmission | 26 |
| Solar_Reflection | 60 |
| Solar_Absorption | 14 |
| Light_Transmission | 25 |
| Light_Absorption | 64 |
| GtotInt | 0,35 |
| UV_Reduction | 95 |
| Sound_Absorption | 0,6 |
| Ref. | EC/001 |
| Composition | 100% RECYCLED PET |
| F.R. Classification | Classe 1 (I), M1(F), B1(D),NFPA 701(US) |
| HealthCertification | CRADLE TO CRADLE, GREENGUARD GOLD |
| Transparency | Dimout |
| Colour_fastness_to_light | 6/8 |
| Outdoor | No |
| Sealable | No |
| adjustable | No |
| jointed | No |
| IMO | IMO |
| Tone | White |
| Warp_daN5cm | 114 |
| Weft_daN5cm | 127 |



Rullo



Verticali



Panels

