



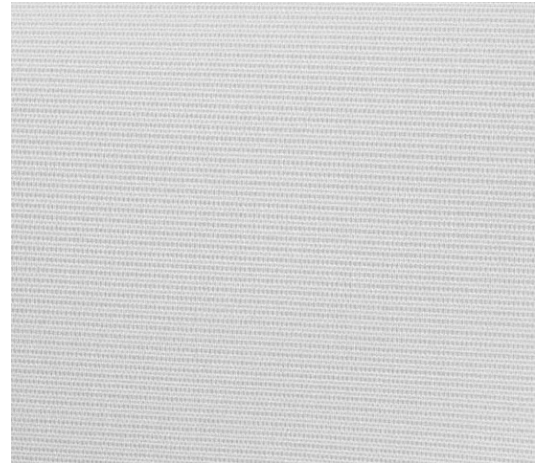
Suono F.R. / Ref. SR/820

CHARACTERISTICS

Width cm	250
Thickness	0,55
Weight g/m2	430
Solar_Trasmission	19
Solar_Reflection	72
Solar_Absorption	9
Light_Transmission	17
Light_Absorption	80
Gtotlnt	0,34
UV_Reduction	98
Sound_Absorption	0,8
Ref.	SR/820
Composition	36% FV 64% PVC
F.R. Classification	Euroclass C-s3- d0 (EU), Classe 1 (I), M1 (F), BS (GB), NFPA 701 (US), F3 (F), IMO
HealthCertification	GREENGUARD, OEKO-TEX
Transparency	Dimout
Colour_fastness_ to_light	7/8
Outdoor	No
Sealable	Heat
adjustable	Yes
jointed	Si
IMO	IMO
Tone	White
Warp_daN5cm	150
Weft_daN5cm	120



Rullo





Suono F.R. / Ref. SR/822

CHARACTERISTICS

Width cm	250
Thickness	0,55
Weight g/m2	430
Solar_Trasmission	14
Solar_Reflection	42
Solar_Absorption	44
Light_Transmission	11
Light_Absorption	43
GtotInt	0,44
UV_Reduction	98
Sound_Absorption	0,8
Ref.	SR/822
Composition	36% FV 64% PVC
F.R. Classification	Euroclass C-s3- d0 (EU), Classe 1 (I), M1 (F), BS (GB), NFPA 701 (US), F3 (F), IMO
HealthCertification	GREENGUARD, OEKO-TEX
Transparency	Dimout
Colour_fastness_ to_light	7/8
Outdoor	No
Sealable	Heat
adjustable	Yes
jointed	Si
IMO	IMO
Tone	Grey/Black
Warp_daN5cm	150
Weft_daN5cm	120

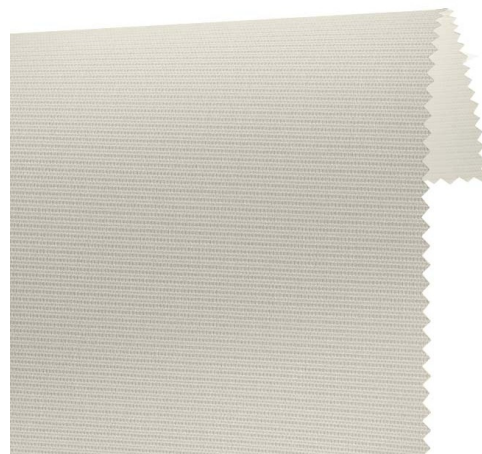


Rullo

Suono F.R. / Ref. SR/821

CHARACTERISTICS

Width cm	250
Thickness	0,55
Weight g/m2	430
Solar_Trasmision	19
Solar_Reflection	65
Solar_Absorption	16
Light_Transmission	16
Light_Absorption	71
GtotInt	0,36
UV_Reduction	98
Sound_Absorption	0,8
Ref.	SR/821
Composition	36% FV 64% PVC
F.R. Classification	Euroclass C-s3- d0 (EU), Classe 1 (I), M1 (F), BS (GB), NFPA 701 (US), F3 (F), IMO
HealthCertification	GREENGUARD, OEKO-TEX
Transparency	Dimout
Colour_fastness_ to_light	7/8
Outdoor	No
Sealable	Heat
adjustable	Yes
jointed	Si
IMO	IMO
Tone	Natural
Warp_daN5cm	150
Weft_daN5cm	120



Rullo