

# Blackout SB F.R. / Ref.

SB/106

## EIGENSCHAFTEN

Width cm	240
Thickness	0,4
Weight g/m2	280
Solar_Reflection	8
Solar_Absorption	92
Light_Absorption	20
GtotInt	0,54
UV_Reduction	100
Ref.	SB/106
Composition	35% PL Trevira CS 65% PU
F.R. Classification	Classe 1 (I), B1 (D)
HealthCertification	No
Transparency	Blackout
Colour_fastness_to_light	5/6
Outdoor	No
Sealable	No
adjustable	No
jointed	No
IMO	No
Tone	Brown



Rullo



Verticali



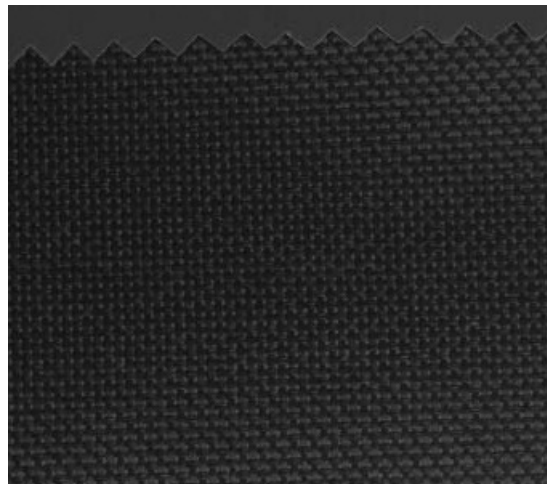
Panels

# Blackout SB F.R. / Ref.

SB/107

## EIGENSCHAFTEN

Width cm	240
Thickness	0,4
Weight g/m2	280
Solar_Reflection	7
Solar_Absorption	93
Light_Absorption	18
GtotInt	0,54
UV_Reduction	100
Ref.	SB/107
Composition	35% PL Trevira CS 65% PU
F.R. Classification	Classe 1 (I), B1 (D)
HealthCertification	No
Transparency	Blackout
Colour_fastness_ to_light	5/6
Outdoor	No
Sealable	No
adjustable	No
jointed	No
IMO	No
Tone	Grey/Black



Rullo



Verticali



Panels

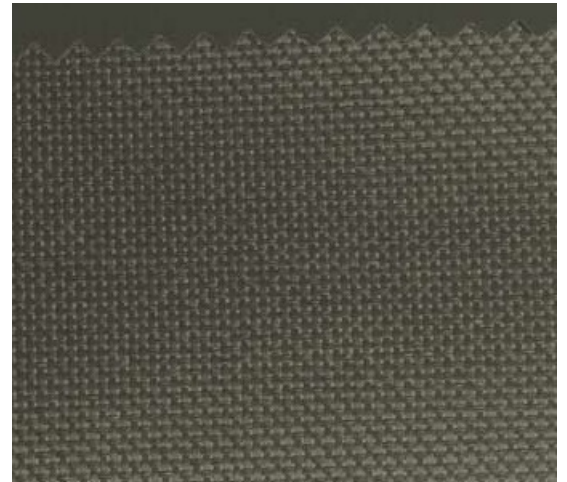


## Blackout SB F.R. / Ref.

SB/105

### EIGENSCHAFTEN

Width cm	240
Thickness	0,4
Weight g/m2	280
Solar_Reflection	12
Solar_Absorption	88
Light_Absorption	26
GtotInt	0,53
UV_Reduction	100
Ref.	SB/105
Composition	35% PL Trevira CS 65% PU
F.R. Classification	Classe 1 (I), B1 (D)
HealthCertification	No
Transparency	Blackout
Colour_fastness_to_light	5/6
Outdoor	No
Sealable	No
adjustable	No
jointed	No
IMO	No
Tone	Grey/Black



Rullo



Verticali



Panels

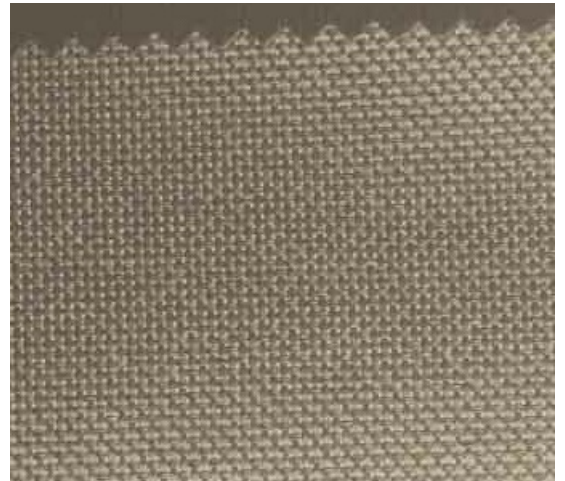


# Blackout SB F.R. / Ref.

SB/104

## EIGENSCHAFTEN

Width cm	240
Thickness	0,4
Weight g/m2	280
Solar_Reflection	16
Solar_Absorption	84
Light_Absorption	30
GtotInt	0,52
UV_Reduction	100
Ref.	SB/104
Composition	35% PL Trevira CS 65% PU
F.R. Classification	Classe 1 (I), B1 (D)
HealthCertification	No
Transparency	Blackout
Colour_fastness_to_light	5/6
Outdoor	No
Sealable	No
adjustable	No
jointed	No
IMO	No
Tone	Beige



Rullo



Verticali



Panels

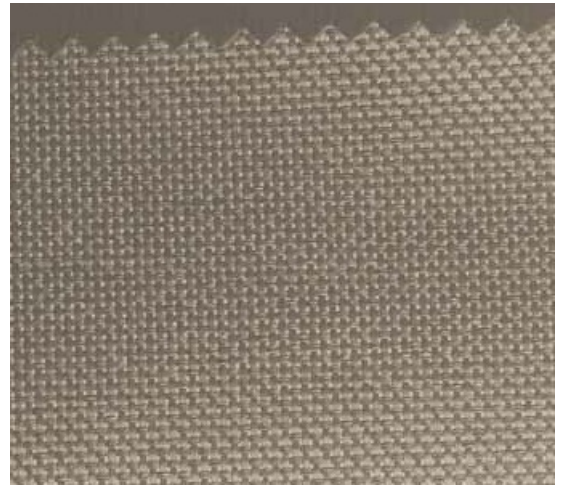


## *Blackout SB F.R. / Ref.*

*SB/103*

### EIGENSCHAFTEN

<b>Width cm</b>	240
<b>Thickness</b>	0,4
<b>Weight g/m2</b>	280
<b>Solar_Reflection</b>	33
<b>Solar_Absorption</b>	67
<b>Light_Absorption</b>	45
<b>GtotInt</b>	0,46
<b>UV_Reduction</b>	100
<b>Ref.</b>	SB/103
<b>Composition</b>	35% PL Trevira CS 65% PU
<b>F.R. Classification</b>	Classe 1 (I), B1 (D)
<b>HealthCertification</b>	No
<b>Transparency</b>	Blackout
<b>Colour_fastness_to_light</b>	5/6
<b>Outdoor</b>	No
<b>Sealable</b>	No
<b>adjustable</b>	No
<b>jointed</b>	No
<b>IMO</b>	No
<b>Tone</b>	Grey/Black



Rullo



Verticali



Panels

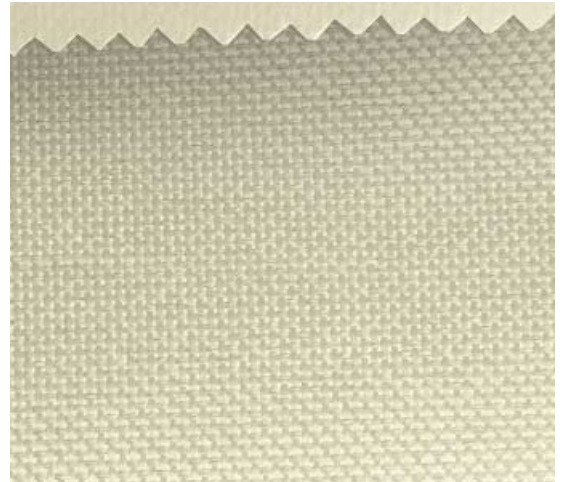


## Blackout SB F.R. / Ref.

SB/102

### EIGENSCHAFTEN

Width cm	240
Thickness	0,47
Weight g/m2	340
Solar_Reflection	64
Solar_Absorption	36
Light_Absorption	75
GtotInt	0,36
UV_Reduction	100
Ref.	SB/102
Composition	35% PL Trevira CS 65% PU
F.R. Classification	Classe 1 (I), B1 (D)
HealthCertification	No
Transparency	Blackout
Colour_fastness_to_light	5/6
Outdoor	No
Sealable	No
adjustable	No
jointed	No
IMO	No
Tone	Natural



Rullo



Verticali



Panels

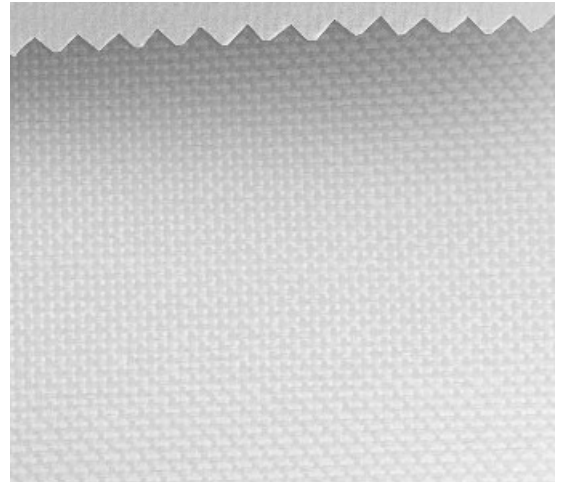


# Blackout SB F.R. / Ref.

SB/101

## EIGENSCHAFTEN

Width cm	240
Thickness	0,47
Weight g/m2	340
Solar_Reflection	67
Solar_Absorption	33
Light_Absorption	78
GtotInt	0,35
UV_Reduction	100
Ref.	SB/101
Composition	35% PL Trevira CS 65% PU
F.R. Classification	Classe 1 (I), B1 (D)
HealthCertification	No
Transparency	Blackout
Colour_fastness_ to_light	5/6
Outdoor	No
Sealable	No
adjustable	No
jointed	No
IMO	No
Tone	White



Rullo



Verticali



Panels

