

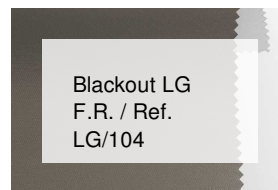
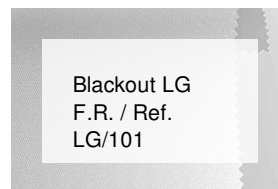
# Blackout LG F.R. / Ref. LG/102

## CHARACTERISTICS

Width cm	205
Thickness	0,22
Weight g/m2	165
Solar_Reflection	49
Solar_Absorption	51
Light_Absorption	68
GtotInt	0,43
UV_Reduction	100
Ref.	LG/102
Composition	50%PL FR 50%PL
F.R. Classification	Classe 1 (I)<A59>B1(D)
HealthCertification	No
Transparency	Blackout
Colour_fastness_to_light	5
Outdoor	No
Sealable	No
adjustable	No
jointed	No
IMO	IMO
Tone	Beige



## OTHER COLORS



Rullo