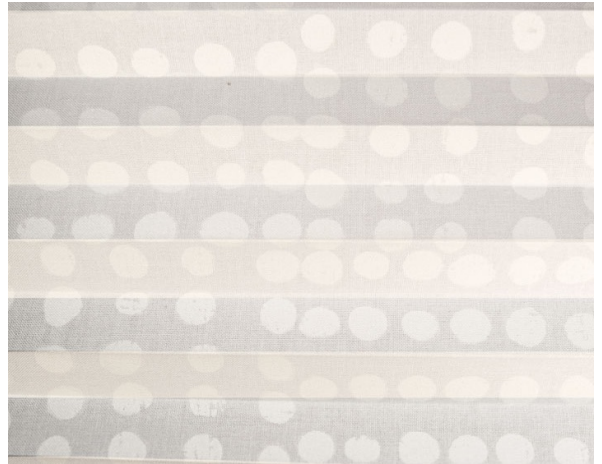


Bolle F.R. Plisse / Art.

TP/3767/121

ХАРАКТЕРИСТИКИ

| | |
|--------------------------------------|---|
| Width cm | 225 |
| Thickness | 0,35 |
| Weight g/m2 | 200 |
| Solar_Trasmission | 30 |
| Solar_Reflection | 53 |
| Solar_Absorption | 17 |
| Light_Transmission | 28 |
| Light_Absorption | 57 |
| GtotInt | 0,5 |
| Ref. | TP/3767/121 |
| Composition | 100% PL Trevira CS |
| F.R. Classification | Classe 1 (I), M1 (F), B1(D), BS (GB) |
| HealthCertification | OEKO-TEX |
| Transparency | Low Transparent |
| Colour_fastness_ to_light | 6/7 |
| Outdoor | No |
| Sealable | No |
| adjustable | Yes |
| jointed | Si |
| IMO | No |
| Tone | White |



Plissé

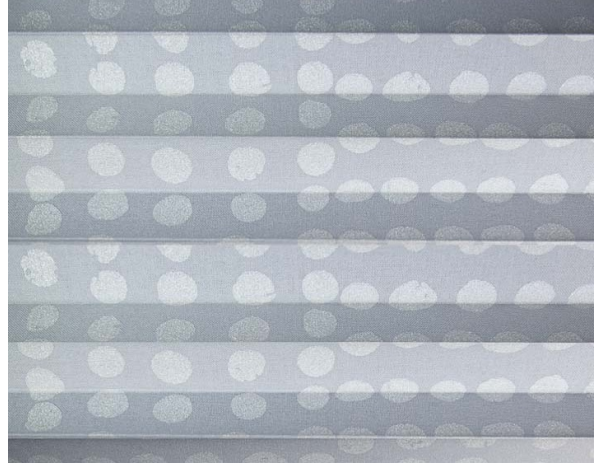


Bolle F.R. Plisse / Art.

TP/3767/122

ХАРАКТЕРИСТИКИ

| | |
|--------------------------------------|---|
| Width cm | 225 |
| Thickness | 0,35 |
| Weight g/m2 | 200 |
| Solar_Trasmision | 33 |
| Solar_Reflection | 42 |
| Solar_Absorption | 25 |
| Light_Transmission | 31 |
| Light_Absorption | 46 |
| GtotInt | 0,5 |
| Ref. | TP/3767/122 |
| Composition | 100% PL Trevira CS |
| F.R. Classification | Classe 1 (I), M1 (F), B1(D), BS (GB) |
| HealthCertification | OEKO-TEX |
| Transparency | Low Transparent |
| Colour_fastness_ to_light | 6/7 |
| Outdoor | No |
| Sealable | No |
| adjustable | Yes |
| jointed | Si |
| IMO | No |
| Tone | Grey/Black |



Plissé