

## Suite F.R. / Art. SU/904

### ХАРАКТЕРИСТИКИ

---

|                          |              |
|--------------------------|--------------|
| Width cm                 | 300          |
| Thickness                | 0,45         |
| Weight g/m2              | 325          |
| Solar_Reflection         | 4            |
| Solar_Absorption         | 96           |
| Light_Absorption         | 4            |
| GtotInt                  | 0,55         |
| UV_Reduction             | 98           |
| Ref.                     | SU/904       |
| Composition              | 100% PL F.R. |
| F.R. Classification      | Classe 1 (I) |
| HealthCertification      | No           |
| Transparency             | Blackout     |
| Colour_fastness_to_light | 4/5          |
| Outdoor                  | No           |
| Sealable                 | No           |
| adjustable               | No           |
| jointed                  | No           |
| IMO                      | No           |
| Tone                     | Brown        |



Rullo

## Suite F.R. / Art. SU/903

### ХАРАКТЕРИСТИКИ

---

|                          |              |
|--------------------------|--------------|
| Width cm                 | 300          |
| Thickness                | 0,45         |
| Weight g/m2              | 325          |
| Solar_Reflection         | 4            |
| Solar_Absorption         | 96           |
| Light_Absorption         | 4            |
| GtotInt                  | 0,55         |
| UV_Reduction             | 98           |
| Ref.                     | SU/903       |
| Composition              | 100% PL F.R. |
| F.R. Classification      | Classe 1 (I) |
| HealthCertification      | No           |
| Transparency             | Blackout     |
| Colour_fastness_to_light | 4/5          |
| Outdoor                  | No           |
| Sealable                 | No           |
| adjustable               | No           |
| jointed                  | No           |
| IMO                      | No           |
| Tone                     | Beige        |



Rullo

## Suite F.R. / Art. SU/902

### ХАРАКТЕРИСТИКИ

---

|                          |              |
|--------------------------|--------------|
| Width cm                 | 300          |
| Thickness                | 0,45         |
| Weight g/m2              | 325          |
| Solar_Reflection         | 4            |
| Solar_Absorption         | 96           |
| Light_Absorption         | 4            |
| GtotInt                  | 0,55         |
| UV_Reduction             | 98           |
| Ref.                     | SU/902       |
| Composition              | 100% PL F.R. |
| F.R. Classification      | Classe 1 (I) |
| HealthCertification      | No           |
| Transparency             | Blackout     |
| Colour_fastness_to_light | 4/5          |
| Outdoor                  | No           |
| Sealable                 | No           |
| adjustable               | No           |
| jointed                  | No           |
| IMO                      | No           |
| Tone                     | Beige        |



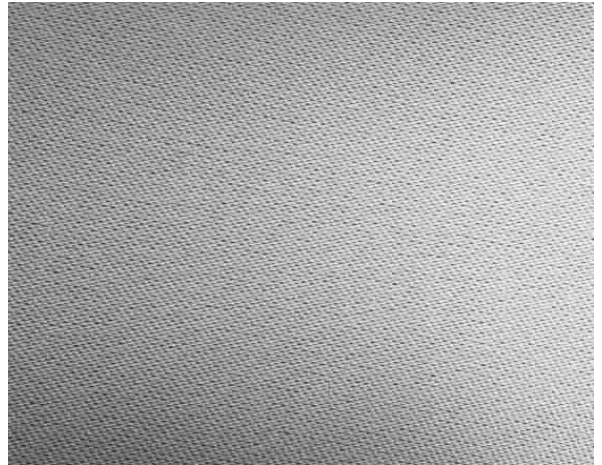
Rullo

## Suite F.R. / Art. SU/901

### ХАРАКТЕРИСТИКИ

---

|                                 |              |
|---------------------------------|--------------|
| <b>Width cm</b>                 | 300          |
| <b>Thickness</b>                | 0,45         |
| <b>Weight g/m2</b>              | 325          |
| <b>Solar_Reflection</b>         | 4            |
| <b>Solar_Absorption</b>         | 96           |
| <b>Light_Absorption</b>         | 4            |
| <b>GtotInt</b>                  | 0,55         |
| <b>UV_Reduction</b>             | 98           |
| <b>Ref.</b>                     | SU/901       |
| <b>Composition</b>              | 100% PL F.R. |
| <b>F.R. Classification</b>      | Classe 1 (I) |
| <b>HealthCertification</b>      | No           |
| <b>Transparency</b>             | Blackout     |
| <b>Colour_fastness_to_light</b> | 4/5          |
| <b>Outdoor</b>                  | No           |
| <b>Sealable</b>                 | No           |
| <b>adjustable</b>               | No           |
| <b>jointed</b>                  | No           |
| <b>IMO</b>                      | No           |
| <b>Tone</b>                     | Grey/Black   |



Rullo