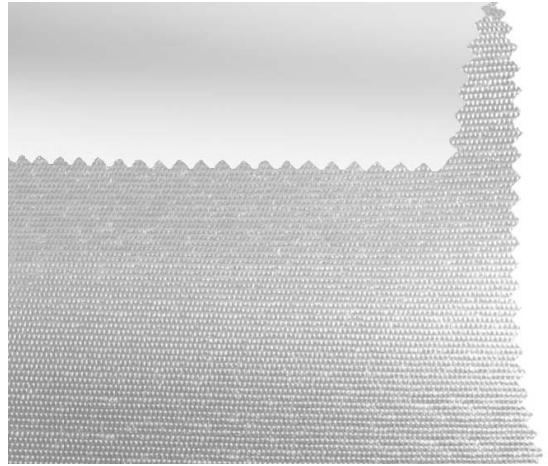


# **Blackout CR F.R. / Art.**

## **CR/255-240**

### ХАРАКТЕРИСТИКИ

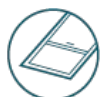
<b>Width cm</b>	240
<b>Thickness</b>	0,47
<b>Weight g/m2</b>	540
<b>Solar_Reflection</b>	45
<b>Solar_Absorption</b>	55
<b>Light_Absorption</b>	41
<b>GtotInt</b>	0,42
<b>UV_Reduction</b>	100
<b>Ref.</b>	CR/255-240
<b>Composition</b>	48% FV 52% RA
<b>F.R. Classification</b>	Classe 1 (I), M1 (F), B1 (D), BS (GB), NFPA 701 (US), F2 (F)
<b>HealthCertification</b>	ANTIBACTERIAL, REACH
<b>Transparency</b>	Blackout
<b>Colour_fastness_to_light</b>	7/8
<b>Outdoor</b>	Outdoor
<b>Sealable</b>	With film
<b>adjustable</b>	Yes
<b>jointed</b>	Si
<b>IMO</b>	No
<b>Tone</b>	Grey/Black
<b>Warp_daN5cm</b>	120
<b>Weft_daN5cm</b>	100



Rullo



Verticali



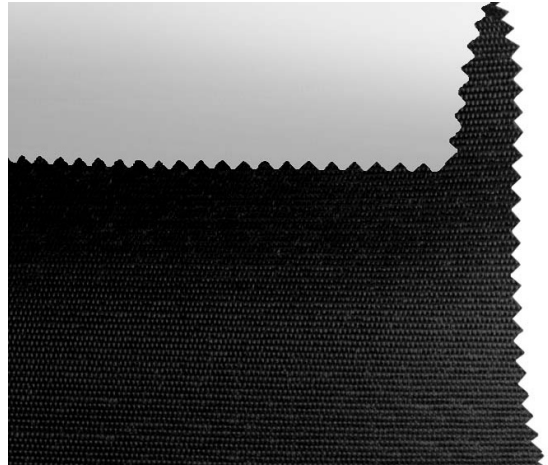
Lucernari

# Blackout CR F.R. / Art.

CR/256-240

## ХАРАКТЕРИСТИКИ

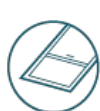
Width cm	240
Thickness	0,47
Weight g/m2	540
Solar_Reflection	4
Solar_Absorption	96
Light_Absorption	4
GtotInt	0,55
UV_Reduction	100
Ref.	CR/256-240
Composition	48% FV 52% RA
F.R. Classification	Classe 1 (I), M1 (F), B1 (D), BS (GB), NFPA 701 (US), F2 (F)
HealthCertification	ANTIBACTERIAL, REACH
Transparency	Blackout
Colour_fastness_to_light	7/8
Outdoor	Outdoor
Sealable	With film
adjustable	Yes
jointed	Si
IMO	No
Tone	Grey/Black
Warp_daN5cm	120
Weft_daN5cm	100



Rullo



Verticali



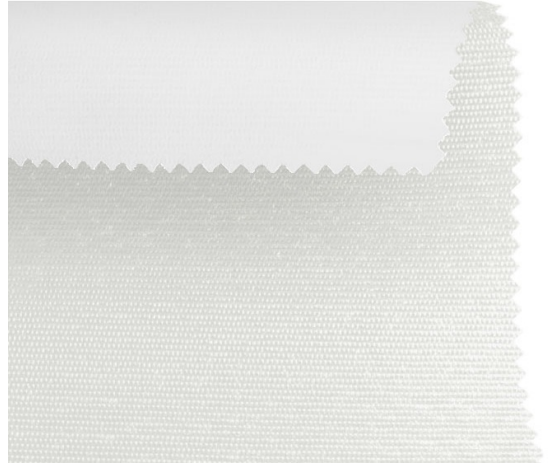
Lucernari

# **Blackout CR F.R. / Art.**

## **CR/253-240**

### ХАРАКТЕРИСТИКИ

<b>Width cm</b>	240
<b>Thickness</b>	0,47
<b>Weight g/m2</b>	540
<b>Solar_Reflection</b>	76
<b>Solar_Absorption</b>	24
<b>Light_Absorption</b>	83
<b>GtotInt</b>	0,32
<b>UV_Reduction</b>	100
<b>Ref.</b>	CR/253-240
<b>Composition</b>	48% FV 52% RA
<b>F.R. Classification</b>	Classe 1 (I), M1 (F), B1 (D), BS (GB), NFPA 701 (US), F2 (F)
<b>HealthCertification</b>	ANTIBACTERIAL, REACH
<b>Transparency</b>	Blackout
<b>Colour_fastness_to_light</b>	7/8
<b>Outdoor</b>	Outdoor
<b>Sealable</b>	With film
<b>adjustable</b>	Yes
<b>jointed</b>	Si
<b>IMO</b>	No
<b>Tone</b>	White
<b>Warp_daN5cm</b>	120
<b>Weft_daN5cm</b>	100



Rullo



Verticali



Lucernari

# Blackout CR F.R. / Art.

CR/264-240

## ХАРАКТЕРИСТИКИ

Width cm	240
Thickness	0,47
Weight g/m2	540
Solar_Reflection	14
Solar_Absorption	86
Light_Absorption	10
GtotInt	0,52
UV_Reduction	100
Ref.	CR/264-240
Composition	48% FV 52% RA
F.R. Classification	Classe 1 (I), M1 (F), B1 (D), BS (GB), NFPA 701 (US), F2 (F)
HealthCertification	ANTIBACTERIAL, REACH
Transparency	Blackout
Colour_fastness_to_light	7/8
Outdoor	Outdoor
Sealable	With film
adjustable	Yes
jointed	Si
IMO	No
Tone	Blue
Warp_daN5cm	120
Weft_daN5cm	100



Rullo



Verticali

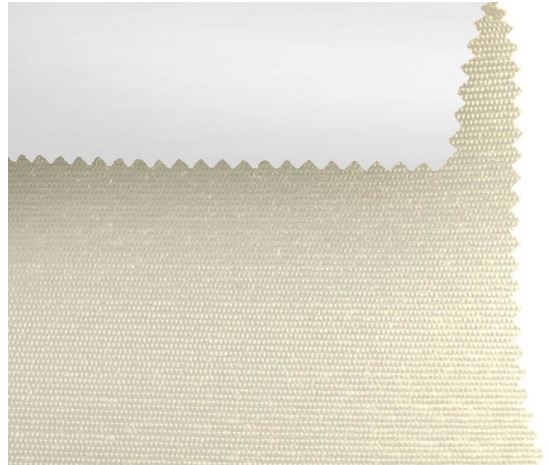


Lucernari

# Blackout CR F.R. / Art. CR/261-240

## ХАРАКТЕРИСТИКИ

Width cm	240
Thickness	0,47
Weight g/m2	540
Solar_Reflection	64
Solar_Absorption	36
Light_Absorption	65
GtotInt	0,36
UV_Reduction	100
Ref.	CR/261-240
Composition	48% FV 52% RA
F.R. Classification	Classe 1 (I), M1 (F), B1 (D), BS (GB), NFPA 701 (US), F2 (F)
HealthCertification	ANTIBACTERIAL, REACH
Transparency	Blackout
Colour_fastness_to_light	7/8
Outdoor	Outdoor
Sealable	With film
adjustable	Yes
jointed	Si
IMO	No
Tone	Yellow
Warp_daN5cm	120
Weft_daN5cm	100



Rullo



Verticali

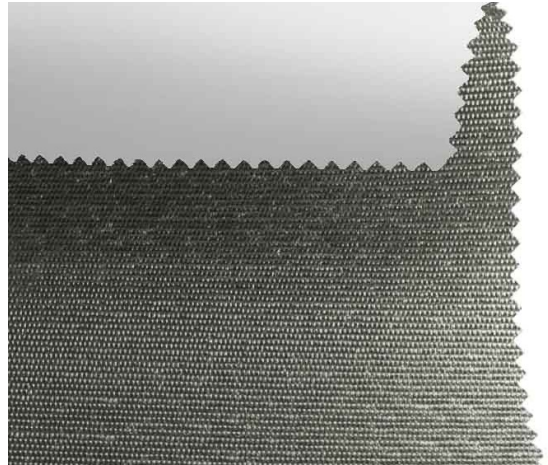


Lucernari

# Blackout CR F.R. / Art. CR/260-240

## ХАРАКТЕРИСТИКИ

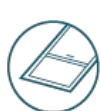
Width cm	240
Thickness	0,47
Weight g/m2	540
Solar_Reflection	28
Solar_Absorption	72
Light_Absorption	24
GtotInt	0,48
UV_Reduction	100
Ref.	CR/260-240
Composition	48% FV 52% RA
F.R. Classification	Classe 1 (I), M1 (F), B1 (D), BS (GB), NFPA 701 (US), F2 (F)
HealthCertification	ANTIBACTERIAL, REACH
Transparency	Blackout
Colour_fastness_to_light	7/8
Outdoor	Outdoor
Sealable	With film
adjustable	Yes
jointed	Si
IMO	No
Tone	Grey/Black
Warp_daN5cm	120
Weft_daN5cm	100



Rullo



Verticali



Lucernari

# **Blackout CR F.R. / Art.**

## **CR/258-240**

### ХАРАКТЕРИСТИКИ

<b>Width cm</b>	240
<b>Thickness</b>	0,47
<b>Weight g/m2</b>	540
<b>Solar_Reflection</b>	5
<b>Solar_Absorption</b>	95
<b>Light_Absorption</b>	4
<b>GtotInt</b>	0,53
<b>UV_Reduction</b>	100
<b>Ref.</b>	CR/258-240
<b>Composition</b>	48% FV 52% RA
<b>F.R. Classification</b>	Classe 1 (I), M1 (F), B1 (D), BS (GB), NFPA 701 (US), F2 (F)
<b>HealthCertification</b>	ANTIBACTERIAL, REACH
<b>Transparency</b>	Blackout
<b>Colour_fastness_to_light</b>	7/8
<b>Outdoor</b>	Outdoor
<b>Sealable</b>	With film
<b>adjustable</b>	Yes
<b>jointed</b>	Si
<b>IMO</b>	No
<b>Tone</b>	Brown
<b>Warp_daN5cm</b>	120
<b>Weft_daN5cm</b>	100



Rullo



Verticali



Lucernari