

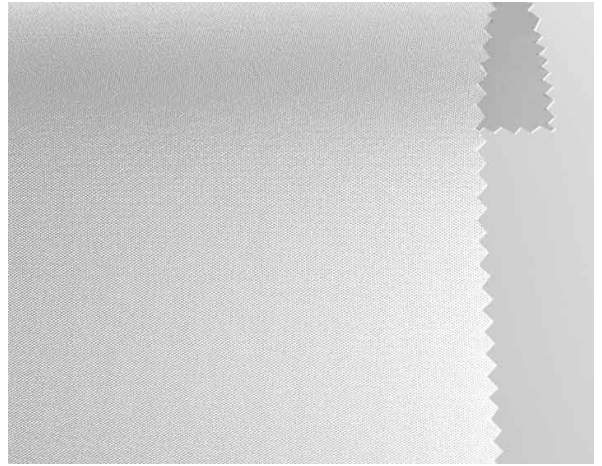
# **Blackout LG F.R. / Ref.**

## **LG/101**

### RECURSOS

---

|                                 |                        |
|---------------------------------|------------------------|
| <b>Width cm</b>                 | 205                    |
| <b>Thickness</b>                | 0,22                   |
| <b>Weight g/m2</b>              | 165                    |
| <b>Solar_Reflection</b>         | 49                     |
| <b>Solar_Absorption</b>         | 51                     |
| <b>Light_Absorption</b>         | 68                     |
| <b>GtotInt</b>                  | 0,43                   |
| <b>UV_Reduction</b>             | 100                    |
| <b>Ref.</b>                     | LG/101                 |
| <b>Composition</b>              | 50%PL FR 50%PL         |
| <b>F.R. Classification</b>      | Classe 1 (I)<A59>B1(D) |
| <b>HealthCertification</b>      | No                     |
| <b>Transparency</b>             | Blackout               |
| <b>Colour_fastness_to_light</b> | 5                      |
| <b>Outdoor</b>                  | No                     |
| <b>Sealable</b>                 | No                     |
| <b>adjustable</b>               | No                     |
| <b>jointed</b>                  | No                     |
| <b>IMO</b>                      | IMO                    |
| <b>Tone</b>                     | White                  |



Rullo



# **Blackout LG F.R. / Ref.**

## **LG/102**

### RECURSOS

---

|                                 |                        |
|---------------------------------|------------------------|
| <b>Width cm</b>                 | 205                    |
| <b>Thickness</b>                | 0,22                   |
| <b>Weight g/m2</b>              | 165                    |
| <b>Solar_Reflection</b>         | 49                     |
| <b>Solar_Absorption</b>         | 51                     |
| <b>Light_Absorption</b>         | 68                     |
| <b>GtotInt</b>                  | 0,43                   |
| <b>UV_Reduction</b>             | 100                    |
| <b>Ref.</b>                     | LG/102                 |
| <b>Composition</b>              | 50%PL FR 50%PL         |
| <b>F.R. Classification</b>      | Classe 1 (I)<A59>B1(D) |
| <b>HealthCertification</b>      | No                     |
| <b>Transparency</b>             | Blackout               |
| <b>Colour_fastness_to_light</b> | 5                      |
| <b>Outdoor</b>                  | No                     |
| <b>Sealable</b>                 | No                     |
| <b>adjustable</b>               | No                     |
| <b>jointed</b>                  | No                     |
| <b>IMO</b>                      | IMO                    |
| <b>Tone</b>                     | Beige                  |



Rullo



# **Blackout LG F.R. / Ref.**

## **LG/103**

### RECURSOS

|                                 |                        |
|---------------------------------|------------------------|
| <b>Width cm</b>                 | 205                    |
| <b>Thickness</b>                | 0,22                   |
| <b>Weight g/m2</b>              | 165                    |
| <b>Solar_Reflection</b>         | 49                     |
| <b>Solar_Absorption</b>         | 51                     |
| <b>Light_Absorption</b>         | 68                     |
| <b>GtotInt</b>                  | 0,43                   |
| <b>UV_Reduction</b>             | 100                    |
| <b>Ref.</b>                     | LG/103                 |
| <b>Composition</b>              | 50%PL FR 50%PL         |
| <b>F.R. Classification</b>      | Classe 1 (I)<A59>B1(D) |
| <b>HealthCertification</b>      | No                     |
| <b>Transparency</b>             | Blackout               |
| <b>Colour_fastness_to_light</b> | 5                      |
| <b>Outdoor</b>                  | No                     |
| <b>Sealable</b>                 | No                     |
| <b>adjustable</b>               | No                     |
| <b>jointed</b>                  | No                     |
| <b>IMO</b>                      | IMO                    |
| <b>Tone</b>                     | Brown                  |



Rullo

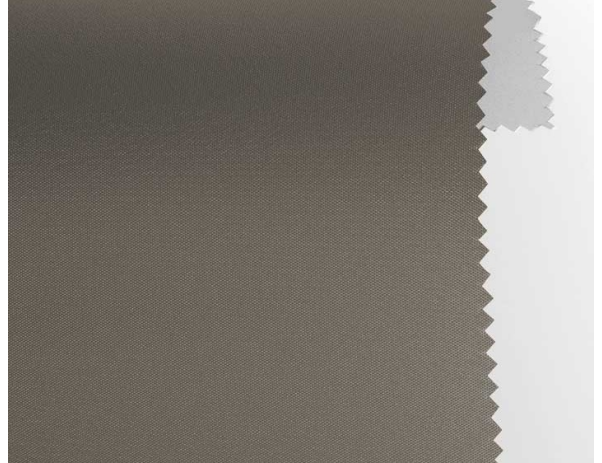


# **Blackout LG F.R. / Ref.**

## **LG/104**

### RECURSOS

|                                 |                        |
|---------------------------------|------------------------|
| <b>Width cm</b>                 | 205                    |
| <b>Thickness</b>                | 0,22                   |
| <b>Weight g/m2</b>              | 165                    |
| <b>Solar_Reflection</b>         | 49                     |
| <b>Solar_Absorption</b>         | 51                     |
| <b>Light_Absorption</b>         | 68                     |
| <b>GtotInt</b>                  | 0,43                   |
| <b>UV_Reduction</b>             | 100                    |
| <b>Ref.</b>                     | LG/104                 |
| <b>Composition</b>              | 50%PL FR 50%PL         |
| <b>F.R. Classification</b>      | Classe 1 (I)<A59>B1(D) |
| <b>HealthCertification</b>      | No                     |
| <b>Transparency</b>             | Blackout               |
| <b>Colour_fastness_to_light</b> | 5                      |
| <b>Outdoor</b>                  | No                     |
| <b>Sealable</b>                 | No                     |
| <b>adjustable</b>               | No                     |
| <b>jointed</b>                  | No                     |
| <b>IMO</b>                      | IMO                    |
| <b>Tone</b>                     | Grey/Black             |



Rullo