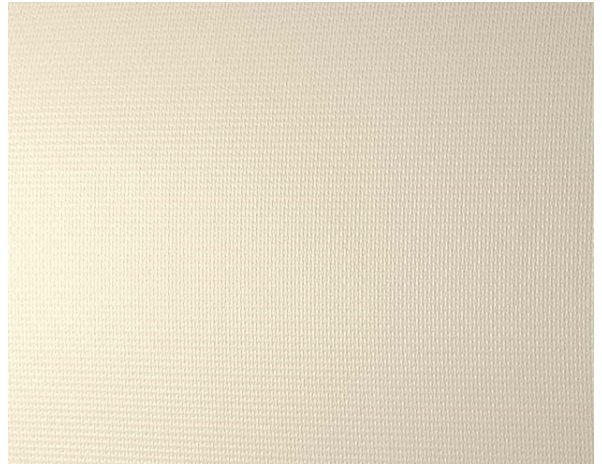


Blackout KR F.R. / Ref.

KR/272-250

RECURSOS

Width cm	250
Thickness	0,3
Weight g/m2	487
Solar_Reflection	60
Solar_Absorption	40
Light_Absorption	75
GtotInt	0,42
UV_Reduction	100
Ref.	KR/272-250
Composition	28% FV 72% PVC
F.R. Classification	Classe 1 (I), NFPA701 (US)
HealthCertification	No
Transparency	Blackout
Colour_fastness_to_light	5/6
Outdoor	No
Sealable	Heat
adjustable	Yes
jointed	Si
IMO	No
Tone	Natural
Warp_daN5cm	261
Weft_daN5cm	212



Rullo



Verticali



Lucernari



Garden

Blackout KR F.R. / Ref.

KR/271-183



RECURSOS

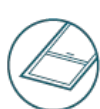
Width cm	183
Thickness	0,3
Weight g/m2	420
Solar_Reflection	16
Solar_Absorption	84
Light_Absorption	20
GtotInt	0,83
UV_Reduction	100
Ref.	KR/271-183
Composition	25% FV 75% PVC
F.R. Classification	Classe 1 (I), NFPA701 (US)
HealthCertification	No
Transparency	Blackout
Colour_fastness_to_light	5/6
Outdoor	No
Sealable	Heat
adjustable	Yes
jointed	Si
IMO	No
Tone	Grey/Black
Warp_daN5cm	261
Weft_daN5cm	212



Rullo



Verticali



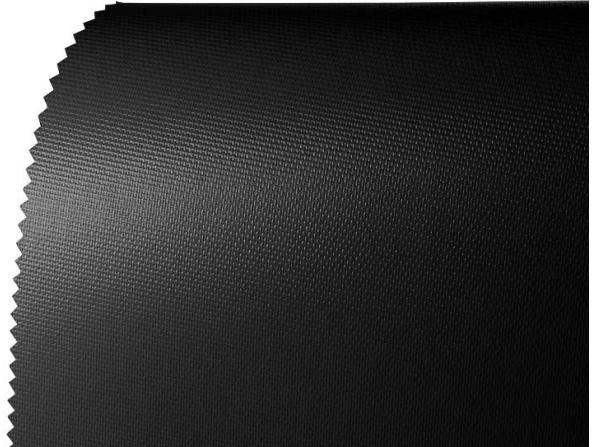
Lucernari



Garden

Blackout KR F.R. / Ref.

KR/270-250



RECURSOS

Width cm	250
Thickness	0,3
Weight g/m2	487
Solar_Reflection	5
Solar_Absorption	95
Light_Absorption	7
GtotInt	0,95
UV_Reduction	100
Ref.	KR/270-250
Composition	28% FV 72% PVC
F.R. Classification	Classe 1 (I), NFPA701 (US)
HealthCertification	No
Transparency	Blackout
Colour_fastness_to_light	5/6
Outdoor	No
Sealable	Heat
adjustable	Yes
jointed	Si
IMO	No
Tone	Grey/Black
Warp_daN5cm	261
Weft_daN5cm	212



Rullo



Verticali



Lucernari



Garden

Blackout KR F.R. / Ref.

KR/265-250

RECURSOS

Width cm	250
Thickness	0,3
Weight g/m2	487
Solar_Reflection	45
Solar_Absorption	55
Light_Absorption	53
GtotInt	0,54
UV_Reduction	100
Ref.	KR/265-250
Composition	28% FV 72% PVC
F.R. Classification	Classe 1 (I), NFPA701 (US)
HealthCertification	No
Transparency	Blackout
Colour_fastness_to_light	5/6
Outdoor	No
Sealable	Heat
adjustable	Yes
jointed	Si
IMO	No
Tone	Beige
Warp_daN5cm	261
Weft_daN5cm	212



Rullo



Verticali



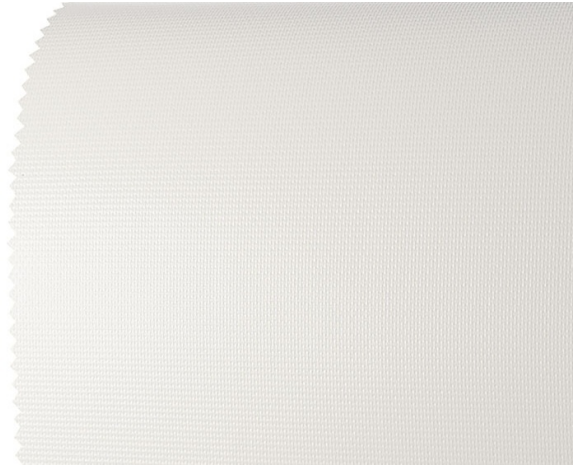
Lucernari



Garden

Blackout KR F.R. / Ref.

KR/263-250



RECURSOS

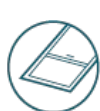
Width cm	250
Thickness	0,3
Weight g/m2	487
Solar_Reflection	56
Solar_Absorption	44
Light_Absorption	76
GtotInt	0,46
UV_Reduction	100
Ref.	KR/263-250
Composition	28% FV 72% PVC
F.R. Classification	Classe 1 (I), NFPA701 (US)
HealthCertification	No
Transparency	Blackout
Colour_fastness_to_light	5/6
Outdoor	No
Sealable	Heat
adjustable	Yes
jointed	Si
IMO	No
Tone	White
Warp_daN5cm	261
Weft_daN5cm	212



Rullo



Verticali



Lucernari



Garden

Blackout KR F.R. / Ref.

KR/267-250



RECURSOS

Width cm	250
Thickness	0,3
Weight g/m2	487
Solar_Reflection	22
Solar_Absorption	78
Light_Absorption	31
GtotInt	0,79
UV_Reduction	100
Ref.	KR/267-250
Composition	28% FV 72% PVC
F.R. Classification	Classe 1 (I), NFPA701 (US)
HealthCertification	No
Transparency	Blackout
Colour_fastness_to_light	5/6
Outdoor	No
Sealable	Heat
adjustable	Yes
jointed	Si
IMO	No
Tone	Grey/Black
Warp_daN5cm	261
Weft_daN5cm	212



Rullo



Verticali



Lucernari



Garden