

Infinito / Art. IN/001

KENMERKEN

| | |
|--------------------------------------|----------------------------------|
| Width cm | 260 |
| Thickness | 0,43 |
| Weight g/m2 | 142 |
| Solar_Trasmission | 41 |
| Solar_Reflection | 55 |
| Solar_Absorption | 4 |
| Light_Transmission | 41 |
| Light_Absorption | 58 |
| GtotInt | 0,43 |
| UV_Reduction | 81 |
| Ref. | IN/001 |
| Composition | 100% PL |
| HealthCertification | OEKO-TEX |
| Transparency | Low Transparent / Transparent |
| Colour_fastness_ to_light | 6/7 |
| Outdoor | No |
| Sealable | No |
| adjustable | No |
| jointed | No |
| IMO | IMO |
| Tone | Natural |



Rullo

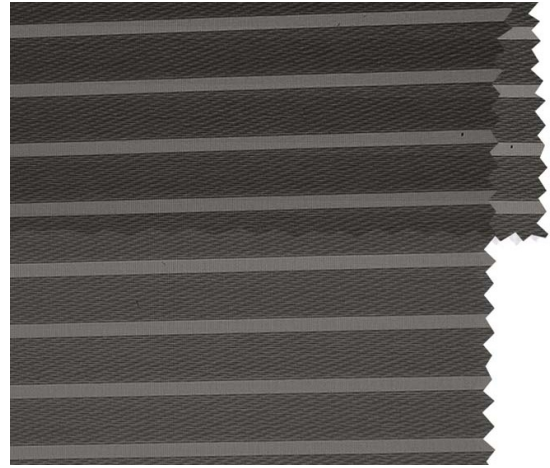


Panels

Infinito / Art. IN/004

KENMERKEN

| | |
|--------------------------------------|----------------------------------|
| Width cm | 260 |
| Thickness | 0,43 |
| Weight g/m2 | 142 |
| Solar_Trasmission | 25 |
| Solar_Reflection | 31 |
| Solar_Absorption | 44 |
| Light_Transmission | 7 |
| Light_Absorption | 7 |
| GtotInt | 0,52 |
| UV_Reduction | 92 |
| Ref. | IN/004 |
| Composition | 100% PL |
| HealthCertification | OEKO-TEX |
| Transparency | Low Transparent / Transparent |
| Colour_fastness_ to_light | 6/7 |
| Outdoor | No |
| Sealable | No |
| adjustable | No |
| jointed | No |
| IMO | IMO |
| Tone | Grey/Black |



Rullo

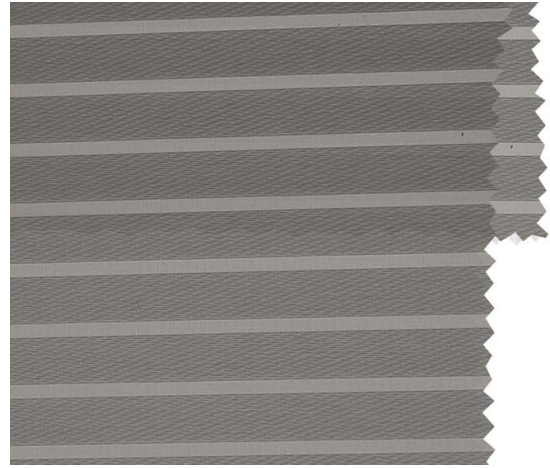


Panels

Infinito / Art. IN/003

KENMERKEN

| | |
|--------------------------------------|----------------------------------|
| Width cm | 260 |
| Thickness | 0,43 |
| Weight g/m2 | 142 |
| Solar_Trasmission | 28 |
| Solar_Reflection | 33 |
| Solar_Absorption | 39 |
| Light_Transmission | 12 |
| Light_Absorption | 12 |
| GtotInt | 0,52 |
| UV_Reduction | 90 |
| Ref. | IN/003 |
| Composition | 100% PL |
| HealthCertification | OEKO-TEX |
| Transparency | Low Transparent / Transparent |
| Colour_fastness_ to_light | 6/7 |
| Outdoor | No |
| Sealable | No |
| adjustable | No |
| jointed | No |
| IMO | IMO |
| Tone | Grey/Black |



Rullo



Panels



Infinito / Art. IN/002

KENMERKEN

| | |
|--------------------------------------|----------------------------------|
| Width cm | 260 |
| Thickness | 0,43 |
| Weight g/m2 | 142 |
| Solar_Trasmission | 38 |
| Solar_Reflection | 54 |
| Solar_Absorption | 8 |
| Light_Transmission | 37 |
| Light_Absorption | 56 |
| GtotInt | 0,43 |
| UV_Reduction | 81 |
| Ref. | IN/002 |
| Composition | 100% PL |
| HealthCertification | OEKO-TEX |
| Transparency | Low Transparent / Transparent |
| Colour_fastness_ to_light | 6/7 |
| Outdoor | No |
| Sealable | No |
| adjustable | No |
| jointed | No |
| IMO | IMO |
| Tone | Beige |



Rullo



Panels