

Astra F.R. / Art. AST/03-300

CARACTÉRISTIQUES

Width cm	300
Thickness	0,35
Weight g/m2	200
Solar_Trasmission	40
Solar_Reflection	47
Solar_Absorption	13
Light_Transmission	37
Light_Absorption	46
GtotInt	0,47
UV_Reduction	83
Ref.	AST/03-300
Composition	100% PL Trevira CS
F.R. Classification	Classe1 (I), M1(F), B1(D), BS (GB), EN 13772 Class1(EU)
HealthCertification	OEKO-TEX
Transparency	Low Transparent
Colour_fastness_to_light	6/7
Outdoor	No
Sealable	No
adjustable	No
jointed	No
IMO	IMO
Tone	Beige



Rullo



Verticali

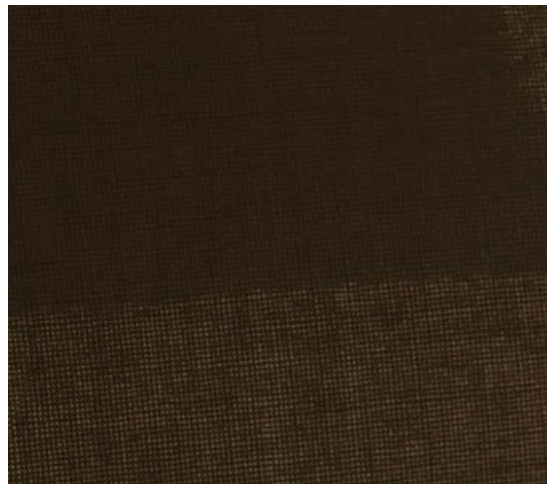


Panels

Astra F.R. / Art. AST/18-230

CARACTÉRISTIQUES

Width cm	230
Thickness	0,35
Weight g/m2	200
Solar_Trasmission	9
Solar_Reflection	6
Solar_Absorption	85
Light_Transmission	13
Light_Absorption	9
GtotInt	0,45
UV_Reduction	82
Ref.	AST/18-230
Composition	100% PL Trevira CS
F.R. Classification	Classe1 (I), M1(F), B1(D), BS (GB), EN 13772 Class1(EU)
HealthCertification	OEKO-TEX
Transparency	Low Transparent
Colour_fastness_to_light	6/7
Outdoor	No
Sealable	No
adjustable	No
jointed	No
IMO	IMO
Tone	Brown



Rullo



Verticali



Panels



Astra F.R. / Art. AST/21-230

CARACTÉRISTIQUES

Width cm	230
Thickness	0,35
Weight g/m2	200
Solar_Trasmission	23
Solar_Reflection	38
Solar_Absorption	39
Light_Transmission	21
Light_Absorption	41
GtotInt	0,45
UV_Reduction	88
Ref.	AST/21-230
Composition	100% PL Trevira CS
F.R. Classification	Classe1 (I), M1(F), B1(D), BS (GB), EN 13772 Class1(EU)
HealthCertification	OEKO-TEX
Transparency	Low Transparent
Colour_fastness_to_light	6/7
Outdoor	No
Sealable	No
adjustable	No
jointed	No
IMO	IMO
Tone	Green



Rullo



Verticali



Panels



Astra F.R. / Art. AST/19-230

CARACTÉRISTIQUES

Width cm	230
Thickness	0,35
Weight g/m2	200
Solar_Trasmision	27
Solar_Reflection	45
Solar_Absorption	28
Light_Transmission	29
Light_Absorption	48
GtotInt	0,45
UV_Reduction	87
Ref.	AST/19-230
Composition	100% PL Trevira CS
F.R. Classification	Classe1 (I), M1(F), B1(D), BS (GB), EN 13772 Class1(EU)
HealthCertification	OEKO-TEX
Transparency	Low Transparent
Colour_fastness_ to_light	6/7
Outdoor	No
Sealable	No
adjustable	No
jointed	No
IMO	IMO
Tone	Yellow



Rullo



Verticali



Panels



Astra F.R. / Art. AST/04-230

CARACTÉRISTIQUES

Width cm	230
Thickness	0,35
Weight g/m2	200
Solar_Trasmission	28
Solar_Reflection	37
Solar_Absorption	35
Light_Transmission	17
Light_Absorption	39
GtotInt	0,45
UV_Reduction	83
Ref.	AST/04-230
Composition	100% PL Trevira CS
F.R. Classification	Classe1 (I), M1(F), B1(D), BS (GB), EN 13772 Class1(EU)
HealthCertification	OEKO-TEX
Transparency	Low Transparent
Colour_fastness_ to_light	6/7
Outdoor	No
Sealable	No
adjustable	No
jointed	No
IMO	IMO
Tone	Brown



Rullo



Verticali



Pannels



Astra F.R. / Art. AST/09-230

CARACTÉRISTIQUES

Width cm	230
Thickness	0,35
Weight g/m2	200
Solar_Trasmission	30
Solar_Reflection	55
Solar_Absorption	15
Light_Transmission	20
Light_Absorption	52
GtotInt	0,45
UV_Reduction	86
Ref.	AST/09-230
Composition	100% PL Trevira CS
F.R. Classification	Classe1 (I), M1(F), B1(D), BS (GB), EN 13772 Class1(EU)
HealthCertification	OEKO-TEX
Transparency	Low Transparent
Colour_fastness_ to_light	6/7
Outdoor	No
Sealable	No
adjustable	No
jointed	No
IMO	IMO
Tone	Blue



Rullo



Verticali



Panels



Astra F.R. / Art. AST/02-300

CARACTÉRISTIQUES

Width cm	300
Thickness	0,35
Weight g/m2	200
Solar_Trasmission	32
Solar_Reflection	48
Solar_Absorption	20
Light_Transmission	42
Light_Absorption	55
GtotInt	0,45
UV_Reduction	89
Ref.	AST/02-300
Composition	100% PL Trevira CS
F.R. Classification	Classe1 (I), M1(F), B1(D), BS (GB), EN 13772 Class1(EU)
HealthCertification	OEKO-TEX
Transparency	Low Transparent
Colour_fastness_to_light	6/7
Outdoor	No
Sealable	No
adjustable	No
jointed	No
IMO	IMO
Tone	Natural



Rullo



Verticali



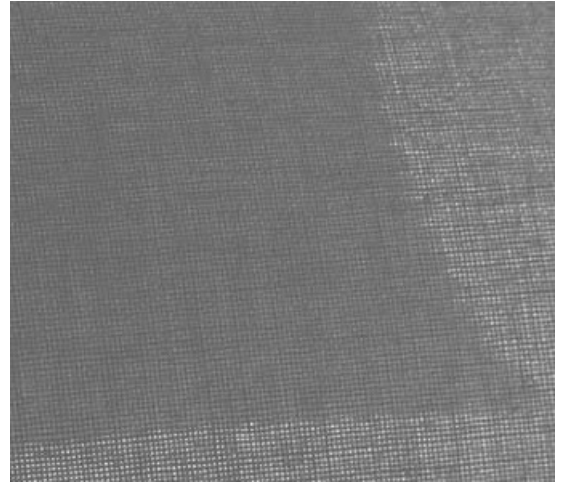
Panels



Astra F.R. / Art. AST/06-300

CARACTÉRISTIQUES

Width cm	300
Thickness	0,35
Weight g/m2	200
Solar_Trasmission	32
Solar_Reflection	42
Solar_Absorption	26
Light_Transmission	20
Light_Absorption	30
GtotInt	0,48
UV_Reduction	86
Ref.	AST/06-300
Composition	100% PL Trevira CS
F.R. Classification	Classe1 (I), M1(F), B1(D), BS (GB), EN 13772 Class1(EU)
HealthCertification	OEKO-TEX
Transparency	Low Transparent
Colour_fastness_to_light	6/7
Outdoor	No
Sealable	No
adjustable	No
jointed	No
IMO	IMO
Tone	Grey/Black



Rullo



Verticali



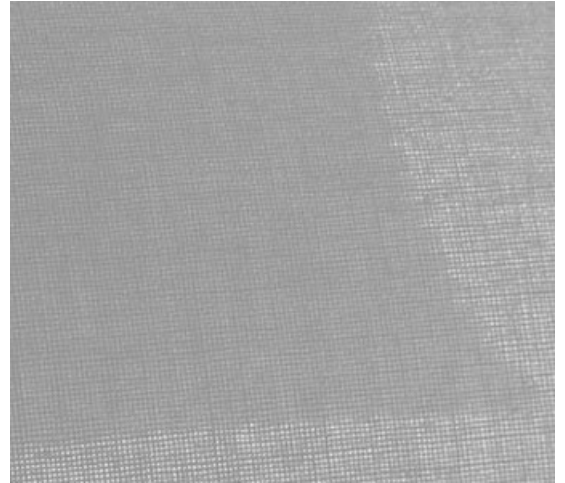
Panels



Astra F.R. / Art. AST/05-300

CARACTÉRISTIQUES

Width cm	300
Thickness	0,35
Weight g/m2	200
Solar_Trasmission	36
Solar_Reflection	49
Solar_Absorption	15
Light_Transmission	31
Light_Absorption	46
GtotInt	0,46
UV_Reduction	85
Ref.	AST/05-300
Composition	100% PL Trevira CS
F.R. Classification	Classe1 (I), M1(F), B1(D), BS (GB), EN 13772 Class1(EU)
HealthCertification	OEKO-TEX
Transparency	Low Transparent
Colour_fastness_ to_light	6/7
Outdoor	Outdoor
Sealable	No
adjustable	No
jointed	No
IMO	IMO
Tone	Grey/Black





Rullo



Verticali



Panels



Astra F.R. / Art. AST/14-230

CARACTÉRISTIQUES

Width cm	230
Thickness	0,35
Weight g/m2	200
Solar_Trasmission	21
Solar_Reflection	28
Solar_Absorption	51
Light_Transmission	18
Light_Absorption	31
GtotInt	0,45
UV_Reduction	85
Ref.	AST/14-230
Composition	100% PL Trevira CS
F.R. Classification	Classe1 (I), M1(F), B1(D), BS (GB), EN 13772 Class1(EU)
HealthCertification	OEKO-TEX
Transparency	Low Transparent
Colour_fastness_to_light	6/7
Outdoor	No
Sealable	No
adjustable	No
jointed	No
IMO	IMO
Tone	Pink





Rullo



Verticali



Panels



Astra F.R. / Art. AST/13-230

CARACTÉRISTIQUES

Width cm	230
Thickness	0,35
Weight g/m2	200
Solar_Trasmission	18
Solar_Reflection	36
Solar_Absorption	46
Light_Transmission	21
Light_Absorption	28
GtotInt	0,45
UV_Reduction	87
Ref.	AST/13-230
Composition	100% PL Trevira CS
F.R. Classification	Classe1 (I), M1(F), B1(D), BS (GB), EN 13772 Class1(EU)
HealthCertification	OEKO-TEX
Transparency	Low Transparent
Colour_fastness_to_light	6/7
Outdoor	No
Sealable	No
adjustable	No
jointed	No
IMO	IMO
Tone	Pink





Rullo



Verticali



Panels



Astra F.R. / Art. AST/10-230

CARACTÉRISTIQUES

Width cm	230
Thickness	0,35
Weight g/m2	200
Solar_Trasmission	17
Solar_Reflection	39
Solar_Absorption	44
Light_Transmission	15
Light_Absorption	38
GtotInt	0,45
UV_Reduction	88
Ref.	AST/10-230
Composition	100% PL Trevira CS
F.R. Classification	Classe1 (I), M1(F), B1(D), BS (GB), EN 13772 Class1(EU)
HealthCertification	OEKO-TEX
Transparency	Low Transparent
Colour_fastness_to_light	6/7
Outdoor	No
Sealable	No
adjustable	No
jointed	No
IMO	IMO
Tone	Blue





Rullo



Verticali



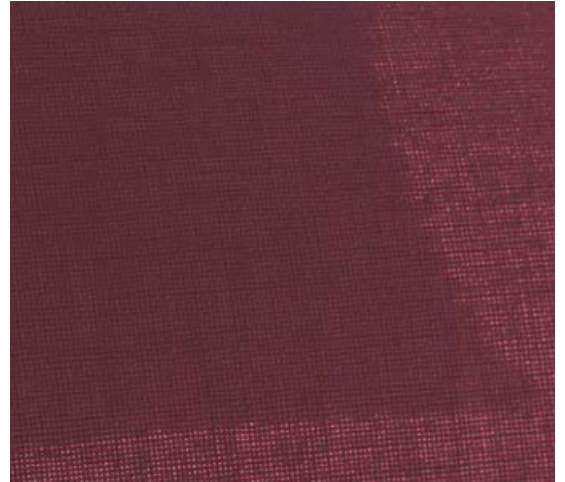
Panels



Astra F.R. / Art. AST/15-230

CARACTÉRISTIQUES

Width cm	230
Thickness	0,35
Weight g/m2	200
Solar_Trasmission	11
Solar_Reflection	18
Solar_Absorption	71
Light_Transmission	12
Light_Absorption	19
GtotInt	0,45
UV_Reduction	84
Ref.	AST/15-230
Composition	100% PL Trevira CS
F.R. Classification	Classe1 (I), M1(F), B1(D), BS (GB), EN 13772 Class1(EU)
HealthCertification	OEKO-TEX
Transparency	Low Transparent
Colour_fastness_to_light	6/7
Outdoor	No
Sealable	No
adjustable	No
jointed	No
IMO	IMO
Tone	Red





Rullo



Verticali



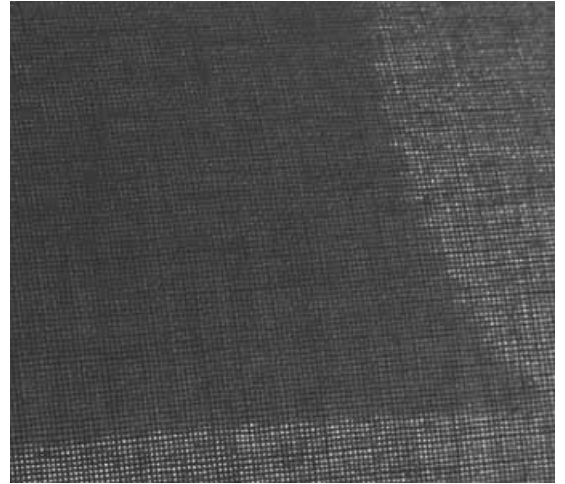
Panels



Astra F.R. / Art. AST/07-300

CARACTÉRISTIQUES

Width cm	300
Thickness	0,35
Weight g/m2	200
Solar_Trasmission	12
Solar_Reflection	13
Solar_Absorption	75
Light_Transmission	13
Light_Absorption	16
GtotInt	0,45
UV_Reduction	81
Ref.	AST/07-300
Composition	100% PL Trevira CS
F.R. Classification	Classe1 (I), M1(F), B1(D), BS (GB), EN 13772 Class1(EU)
HealthCertification	OEKO-TEX
Transparency	Low Transparent
Colour_fastness_to_light	6/7
Outdoor	No
Sealable	No
adjustable	No
jointed	No
IMO	IMO
Tone	Grey/Black





Rullo



Verticali



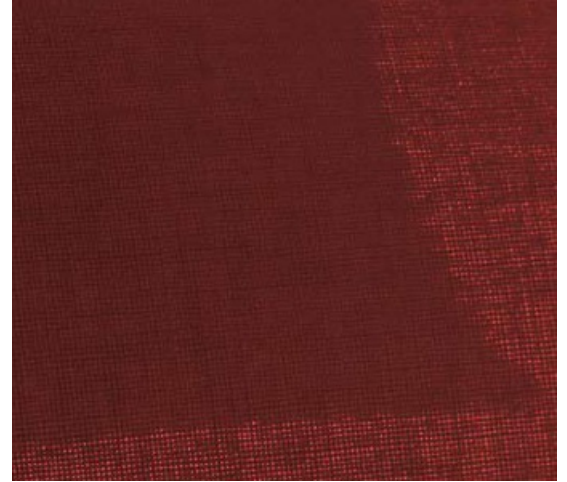
Panels



Astra F.R. / Art. AST/16-230

CARACTÉRISTIQUES

Width cm	230
Thickness	0,35
Weight g/m2	200
Solar_Trasmission	12
Solar_Reflection	16
Solar_Absorption	72
Light_Transmission	13
Light_Absorption	17
GtotInt	0,45
UV_Reduction	82
Ref.	AST/16-230
Composition	100% PL Trevira CS
F.R. Classification	Classe1 (I), M1(F), B1(D), BS (GB), EN 13772 Class1(EU)
HealthCertification	OEKO-TEX
Transparency	Low Transparent
Colour_fastness_to_light	6/7
Outdoor	No
Sealable	No
adjustable	No
jointed	No
IMO	IMO
Tone	Red





Rullo



Verticali



Panels



Astra F.R. / Art. AST/08-300

CARACTÉRISTIQUES

Width cm	300
Thickness	0,35
Weight g/m2	200
Solar_Trasmission	13
Solar_Reflection	7
Solar_Absorption	80
Light_Transmission	11
Light_Absorption	5
GtotInt	0,45
UV_Reduction	81
Ref.	AST/08-300
Composition	100% PL Trevira CS
F.R. Classification	Classe1 (I), M1(F), B1(D), BS (GB), EN 13772 Class1(EU)
HealthCertification	OEKO-TEX
Transparency	Low Transparent
Colour_fastness_to_light	6/7
Outdoor	No
Sealable	No
adjustable	No
jointed	No
IMO	IMO
Tone	Grey/Black





Rullo



Verticali



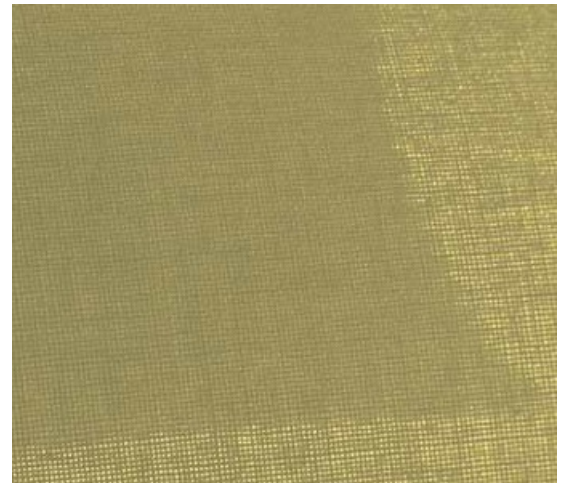
Panels



Astra F.R. / Art. AST/20-230

CARACTÉRISTIQUES

Width cm	230
Thickness	0,35
Weight g/m2	200
Solar_Trasmision	13
Solar_Reflection	30
Solar_Absorption	57
Light_Transmission	14
Light_Absorption	32
GtotInt	0,45
UV_Reduction	85
Ref.	AST/20-230
Composition	100% PL Trevira CS
F.R. Classification	Classe1 (I), M1(F), B1(D), BS (GB), EN 13772 Class1(EU)
HealthCertification	OEKO-TEX
Transparency	Low Transparent
Colour_fastness_to_light	6/7
Outdoor	No
Sealable	No
adjustable	No
jointed	No
IMO	IMO



Tone	Green
-------------	-------



Rullo



Verticali



Panels



Astra F.R. / Art. AST/11-230

CARACTÉRISTIQUES

Width cm	230
Thickness	0,35
Weight g/m2	200
Solar_Trasmission	14
Solar_Reflection	17
Solar_Absorption	69
Light_Transmission	11
Light_Absorption	18
GtotInt	0,45
UV_Reduction	84
Ref.	AST/11-230
Composition	100% PL Trevira CS
F.R. Classification	Classe1 (I), M1(F), B1(D), BS (GB), EN 13772 Class1(EU)
HealthCertification	OEKO-TEX
Transparency	Low Transparent
Colour_fastness_ to_light	6/7
Outdoor	No
Sealable	No
adjustable	No
jointed	No
IMO	IMO



Tone	Blue
-------------	------



Rullo



Verticali



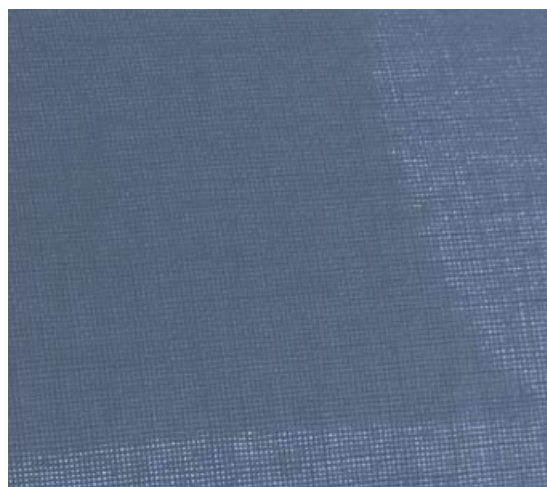
Panels



Astra F.R. / Art. AST/12-230

CARACTÉRISTIQUES

Width cm	230
Thickness	0,35
Weight g/m2	200
Solar_Trasmission	16
Solar_Reflection	24
Solar_Absorption	60
Light_Transmission	12
Light_Absorption	27
GtotInt	0,45
UV_Reduction	85
Ref.	AST/12-230
Composition	100% PL Trevira CS
F.R. Classification	Classe1 (I), M1(F), B1(D), BS (GB), EN 13772 Class1(EU)
HealthCertification	OEKO-TEX
Transparency	Low Transparent
Colour_fastness_ to_light	6/7
Outdoor	No
Sealable	No
adjustable	No
jointed	No



IMO	IMO
Tone	Blue



Rullo



Verticali



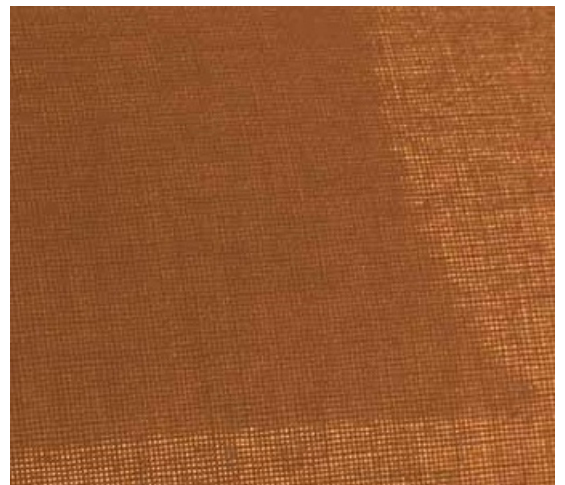
Panels



Astra F.R. / Art. AST/17-230

CARACTÉRISTIQUES

Width cm	230
Thickness	0,35
Weight g/m2	200
Solar_Trasmission	16
Solar_Reflection	34
Solar_Absorption	50
Light_Transmission	13
Light_Absorption	38
GtotInt	0,45
UV_Reduction	87
Ref.	AST/17-230
Composition	100% PL Trevira CS
F.R. Classification	Classe1 (I), M1(F), B1(D), BS (GB), EN 13772 Class1(EU)
HealthCertification	OEKO-TEX
Transparency	Low Transparent
Colour_fastness_to_light	6/7
Outdoor	No
Sealable	No
adjustable	No
jointed	No



IMO	IMO
Tone	Orange



Rullo



Verticali



Panels



Astra F.R. / Art. AST/01-300

CARACTÉRISTIQUES

Width cm	300
Thickness	0,35
Weight g/m2	200
Solar_Trasmission	43
Solar_Reflection	50
Solar_Absorption	7
Light_Transmission	45
Light_Absorption	54
GtotInt	0,45
UV_Reduction	90
Ref.	AST/01-300
Composition	100% PL Trevira CS
F.R. Classification	Classe1 (I), M1(F), B1(D), BS (GB), EN 13772 Class1(EU)
HealthCertification	OEKO-TEX
Transparency	Low Transparent
Colour_fastness_ to_light	6/7
Outdoor	No
Sealable	No
adjustable	No



jointed	No
IMO	IMO
Tone	White



Rullo



Verticali



Panels