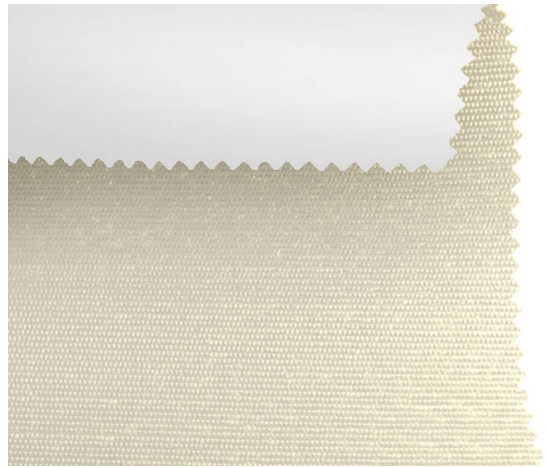


Blackout CR F.R. / Art.

CR/261-240

CARATTERISTICAS

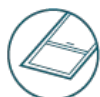
Width cm	240
Thickness	0,47
Weight g/m2	540
Solar_Reflection	64
Solar_Absorption	36
Light_Absorption	65
GtotInt	0,36
UV_Reduction	100
Ref.	CR/261-240
Composition	48% FV 52% RA
F.R. Classification	Classe 1 (I), M1 (F), B1 (D), BS (GB), NFPA 701 (US), F2 (F)
HealthCertification	ANTIBACTERIAL, REACH
Transparency	Blackout
Colour_fastness_to_light	7/8
Outdoor	Outdoor
Sealable	With film
adjustable	Yes
jointed	Si
IMO	No
Tone	Yellow
Warp_daN5cm	120
Weft_daN5cm	100



Rullo



Verticali



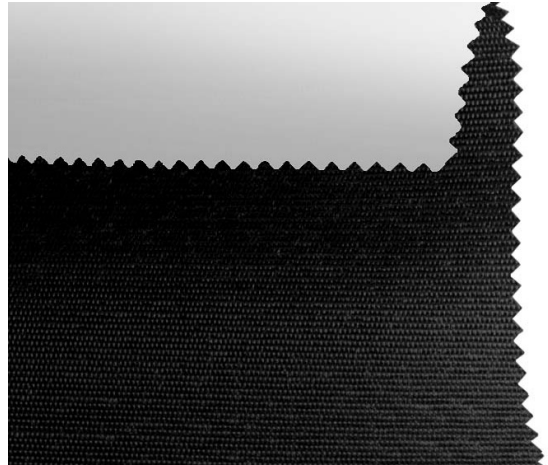
Lucernari

Blackout CR F.R. / Art.

CR/256-240

CARACTERISTICAS

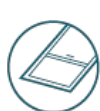
Width cm	240
Thickness	0,47
Weight g/m2	540
Solar_Reflection	4
Solar_Absorption	96
Light_Absorption	4
GtotInt	0,55
UV_Reduction	100
Ref.	CR/256-240
Composition	48% FV 52% RA
F.R. Classification	Classe 1 (I), M1 (F), B1 (D), BS (GB), NFPA 701 (US), F2 (F)
HealthCertification	ANTIBACTERIAL, REACH
Transparency	Blackout
Colour_fastness_to_light	7/8
Outdoor	Outdoor
Sealable	With film
adjustable	Yes
jointed	Si
IMO	No
Tone	Grey/Black
Warp_daN5cm	120
Weft_daN5cm	100



Rullo



Verticali



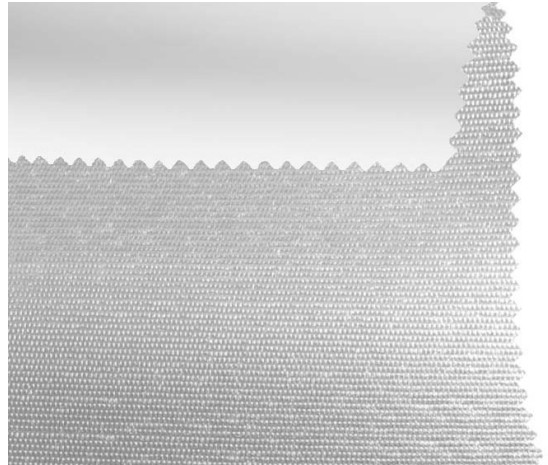
Lucernari



Blackout CR F.R. / Art. CR/255-240

CARACTERISTICAS

Width cm	240
Thickness	0,47
Weight g/m2	540
Solar_Reflection	45
Solar_Absorption	55
Light_Absorption	41
GtotInt	0,42
UV_Reduction	100
Ref.	CR/255-240
Composition	48% FV 52% RA
F.R. Classification	Classe 1 (I), M1 (F), B1 (D), BS (GB), NFPA 701 (US), F2 (F)
HealthCertification	ANTIBACTERIAL, REACH
Transparency	Blackout
Colour_fastness_to_light	7/8
Outdoor	Outdoor
Sealable	With film
adjustable	Yes
jointed	Si
IMO	No
Tone	Grey/Black
Warp_daN5cm	120
Weft_daN5cm	100



Rullo



Verticali



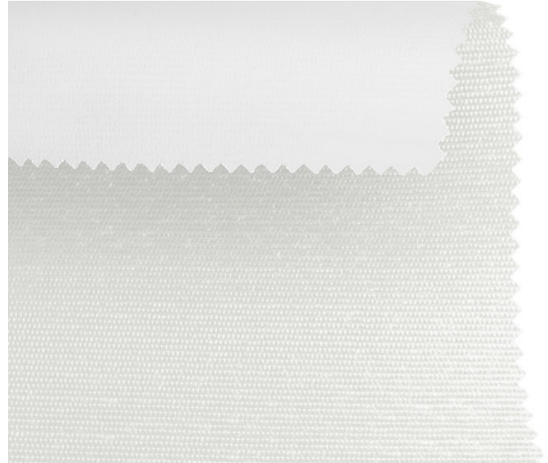
Lucernari



Blackout CR F.R. / Art. CR/253-240

CARACTERISTICAS

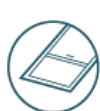
Width cm	240
Thickness	0,47
Weight g/m2	540
Solar_Reflection	76
Solar_Absorption	24
Light_Absorption	83
GtotInt	0,32
UV_Reduction	100
Ref.	CR/253-240
Composition	48% FV 52% RA
F.R. Classification	Classe 1 (I), M1 (F), B1 (D), BS (GB), NFPA 701 (US), F2 (F)
HealthCertification	ANTIBACTERIAL, REACH
Transparency	Blackout
Colour_fastness_to_light	7/8
Outdoor	Outdoor
Sealable	With film
adjustable	Yes
jointed	Si
IMO	No
Tone	White
Warp_daN5cm	120
Weft_daN5cm	100



Rullo



Verticali



Lucernari

Blackout CR F.R. / Art.

CR/264-240

CARACTERISTICAS

Width cm	240
Thickness	0,47
Weight g/m2	540
Solar_Reflection	14
Solar_Absorption	86
Light_Absorption	10
GtotInt	0,52
UV_Reduction	100
Ref.	CR/264-240
Composition	48% FV 52% RA
F.R. Classification	Classe 1 (I), M1 (F), B1 (D), BS (GB), NFPA 701 (US), F2 (F)
HealthCertification	ANTIBACTERIAL, REACH
Transparency	Blackout
Colour_fastness_to_light	7/8
Outdoor	Outdoor
Sealable	With film
adjustable	Yes
jointed	Si
IMO	No
Tone	Blue
Warp_daN5cm	120
Weft_daN5cm	100



Rullo



Verticali



Lucernari

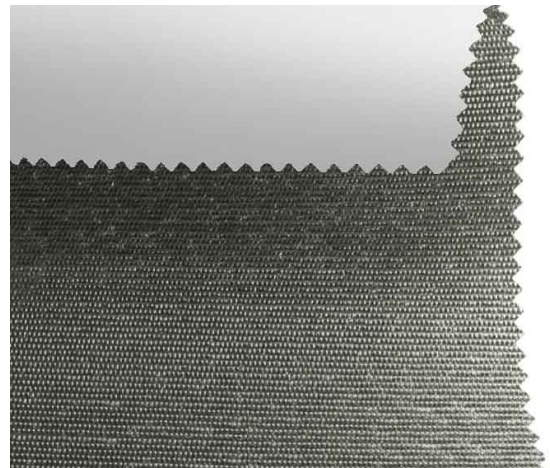


Blackout CR F.R. / Art.

CR/260-240

CARACTERISTICAS

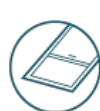
Width cm	240
Thickness	0,47
Weight g/m2	540
Solar_Reflection	28
Solar_Absorption	72
Light_Absorption	24
GtotInt	0,48
UV_Reduction	100
Ref.	CR/260-240
Composition	48% FV 52% RA
F.R. Classification	Classe 1 (I), M1 (F), B1 (D), BS (GB), NFPA 701 (US), F2 (F)
HealthCertification	ANTIBACTERIAL, REACH
Transparency	Blackout
Colour_fastness_to_light	7/8
Outdoor	Outdoor
Sealable	With film
adjustable	Yes
jointed	Si
IMO	No
Tone	Grey/Black
Warp_daN5cm	120
Weft_daN5cm	100



Rullo



Verticali



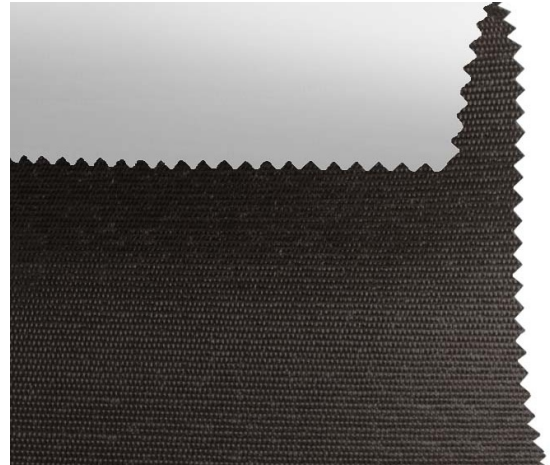
Lucernari

Blackout CR F.R. / Art.

CR/258-240

CARACTERISTICAS

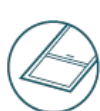
Width cm	240
Thickness	0,47
Weight g/m2	540
Solar_Reflection	5
Solar_Absorption	95
Light_Absorption	4
GtotInt	0,53
UV_Reduction	100
Ref.	CR/258-240
Composition	48% FV 52% RA
F.R. Classification	Classe 1 (I), M1 (F), B1 (D), BS (GB), NFPA 701 (US), F2 (F)
HealthCertification	ANTIBACTERIAL, REACH
Transparency	Blackout
Colour_fastness_to_light	7/8
Outdoor	Outdoor
Sealable	With film
adjustable	Yes
jointed	Si
IMO	No
Tone	Brown
Warp_daN5cm	120
Weft_daN5cm	100



Rullo



Verticali



Lucernari