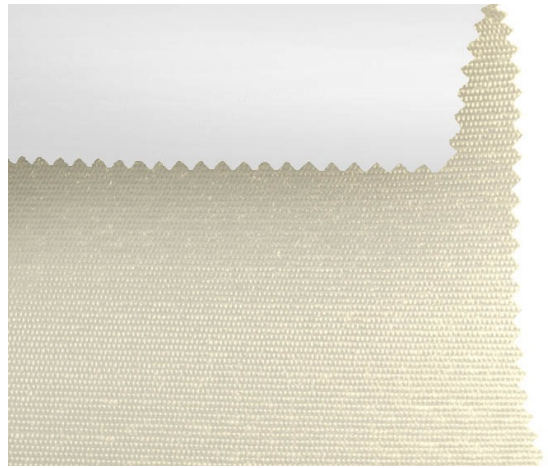


# Blackout CR F.R. / Ref.

CR/261-240

## CHARACTERISTICS

|                                 |  |
|---------------------------------|--|
| <b>Width cm</b>                 | 240  |
| <b>Thickness</b>                | 0,47   |
| <b>Weight g/m2</b>              | 540  |
| <b>Solar_Reflection</b>         | 64   |
| <b>Solar_Absorption</b>         | 36   |
| <b>Light_Absorption</b>         | 65   |
| <b>GtotInt</b>                  | 0,36   |
| <b>UV_Reduction</b>             | 100  |
| <b>Ref.</b>                     | CR/261-240   |
| <b>Composition</b>              | 48% FV 52% RA  |
| <b>F.R. Classification</b>      | Classe 1 (I), M1 (F), B1 (D), BS (GB), NFPA 701 (US), F2 (F) |
| <b>HealthCertification</b>      | ANTIBACTERIAL, REACH   |
| <b>Transparency</b>             | Blackout   |
| <b>Colour_fastness_to_light</b> | 7/8  |
| <b>Outdoor</b>                  | Outdoor  |
| <b>Sealable</b>                 | With film  |
| <b>adjustable</b>               | Yes  |
| <b>jointed</b>                  | Si   |
| <b>IMO</b>                      | No   |
| <b>Tone</b>                     | Yellow   |
| <b>Warp_daN5cm</b>              | 120  |
| <b>Weft_daN5cm</b>              | 100  |



Rullo



Verticali



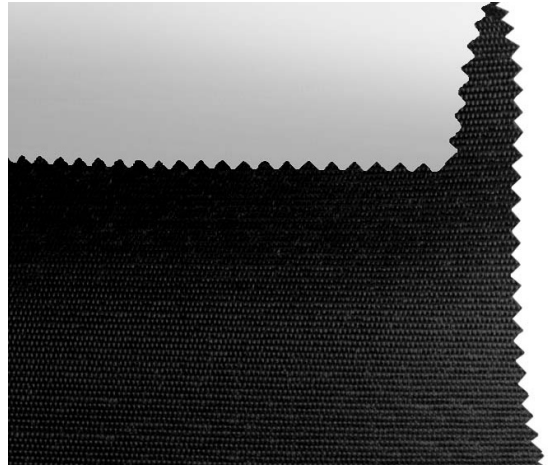
Lucernari

# Blackout CR F.R. / Ref.

CR/256-240

## CHARACTERISTICS

|                          |  |
|--------------------------|--|
| Width cm                 | 240  |
| Thickness                | 0,47   |
| Weight g/m2              | 540  |
| Solar_Reflection         | 4  |
| Solar_Absorption         | 96   |
| Light_Absorption         | 4  |
| GtotInt                  | 0,55   |
| UV_Reduction             | 100  |
| Ref.                     | CR/256-240   |
| Composition              | 48% FV 52% RA  |
| F.R. Classification      | Classe 1 (I), M1 (F), B1 (D), BS (GB), NFPA 701 (US), F2 (F) |
| HealthCertification      | ANTIBACTERIAL, REACH   |
| Transparency             | Blackout   |
| Colour_fastness_to_light | 7/8  |
| Outdoor                  | Outdoor  |
| Sealable                 | With film  |
| adjustable               | Yes  |
| jointed                  | Si   |
| IMO                      | No   |
| Tone                     | Grey/Black   |
| Warp_daN5cm              | 120  |
| Weft_daN5cm              | 100  |



Rullo



Verticali



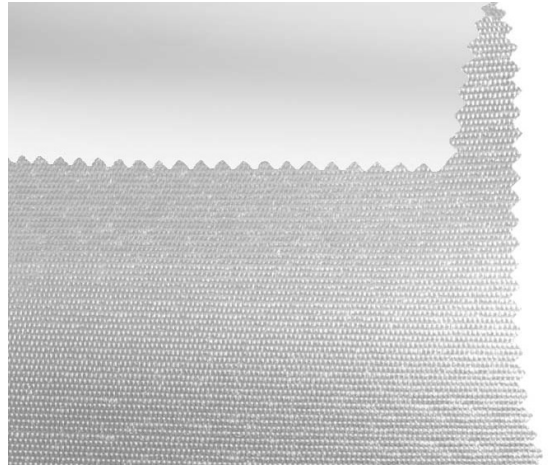
Lucernari

# Blackout CR F.R. / Ref.

CR/255-240

## CHARACTERISTICS

|                          |  |
|--------------------------|--|
| Width cm                 | 240  |
| Thickness                | 0,47   |
| Weight g/m2              | 540  |
| Solar_Reflection         | 45   |
| Solar_Absorption         | 55   |
| Light_Absorption         | 41   |
| GtotInt                  | 0,42   |
| UV_Reduction             | 100  |
| Ref.                     | CR/255-240   |
| Composition              | 48% FV 52% RA  |
| F.R. Classification      | Classe 1 (I), M1 (F), B1 (D), BS (GB), NFPA 701 (US), F2 (F) |
| HealthCertification      | ANTIBACTERIAL, REACH   |
| Transparency             | Blackout   |
| Colour_fastness_to_light | 7/8  |
| Outdoor                  | Outdoor  |
| Sealable                 | With film  |
| adjustable               | Yes  |
| jointed                  | Si   |
| IMO                      | No   |
| Tone                     | Grey/Black   |
| Warp_daN5cm              | 120  |
| Weft_daN5cm              | 100  |



Rullo



Verticali



Lucernari

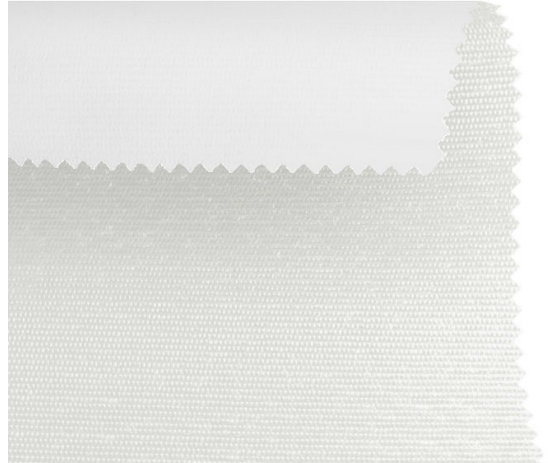


# Blackout CR F.R. / Ref.

CR/253-240

## CHARACTERISTICS

|                          |  |
|--------------------------|--|
| Width cm                 | 240  |
| Thickness                | 0,47   |
| Weight g/m2              | 540  |
| Solar_Reflection         | 76   |
| Solar_Absorption         | 24   |
| Light_Absorption         | 83   |
| GtotInt                  | 0,32   |
| UV_Reduction             | 100  |
| Ref.                     | CR/253-240   |
| Composition              | 48% FV 52% RA  |
| F.R. Classification      | Classe 1 (I), M1 (F), B1 (D), BS (GB), NFPA 701 (US), F2 (F) |
| HealthCertification      | ANTIBACTERIAL, REACH   |
| Transparency             | Blackout   |
| Colour_fastness_to_light | 7/8  |
| Outdoor                  | Outdoor  |
| Sealable                 | With film  |
| adjustable               | Yes  |
| jointed                  | Si   |
| IMO                      | No   |
| Tone                     | White  |
| Warp_daN5cm              | 120  |
| Weft_daN5cm              | 100  |



Rullo



Verticali



Lucernari



# Blackout CR F.R. / Ref.

CR/264-240

## CHARACTERISTICS

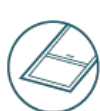
|                          |  |
|--------------------------|--|
| Width cm                 | 240  |
| Thickness                | 0,47   |
| Weight g/m2              | 540  |
| Solar_Reflection         | 14   |
| Solar_Absorption         | 86   |
| Light_Absorption         | 10   |
| GtotInt                  | 0,52   |
| UV_Reduction             | 100  |
| Ref.                     | CR/264-240   |
| Composition              | 48% FV 52% RA  |
| F.R. Classification      | Classe 1 (I), M1 (F), B1 (D), BS (GB), NFPA 701 (US), F2 (F) |
| HealthCertification      | ANTIBACTERIAL, REACH   |
| Transparency             | Blackout   |
| Colour_fastness_to_light | 7/8  |
| Outdoor                  | Outdoor  |
| Sealable                 | With film  |
| adjustable               | Yes  |
| jointed                  | Si   |
| IMO                      | No   |
| Tone                     | Blue   |
| Warp_daN5cm              | 120  |
| Weft_daN5cm              | 100  |



Rullo



Verticali



Lucernari

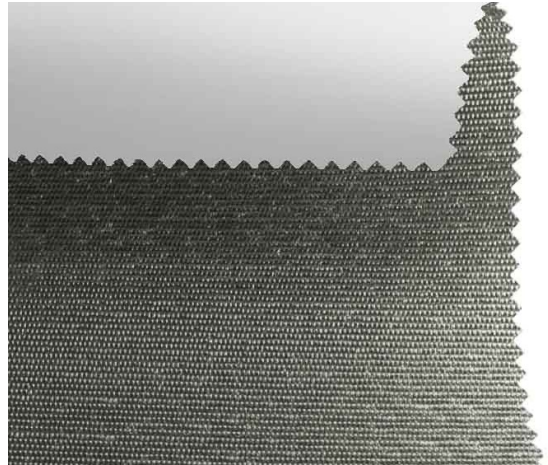


# Blackout CR F.R. / Ref.

CR/260-240

## CHARACTERISTICS

|                          |  |
|--------------------------|--|
| Width cm                 | 240  |
| Thickness                | 0,47   |
| Weight g/m2              | 540  |
| Solar_Reflection         | 28   |
| Solar_Absorption         | 72   |
| Light_Absorption         | 24   |
| GtotInt                  | 0,48   |
| UV_Reduction             | 100  |
| Ref.                     | CR/260-240   |
| Composition              | 48% FV 52% RA  |
| F.R. Classification      | Classe 1 (I), M1 (F), B1 (D), BS (GB), NFPA 701 (US), F2 (F) |
| HealthCertification      | ANTIBACTERIAL, REACH   |
| Transparency             | Blackout   |
| Colour_fastness_to_light | 7/8  |
| Outdoor                  | Outdoor  |
| Sealable                 | With film  |
| adjustable               | Yes  |
| jointed                  | Si   |
| IMO                      | No   |
| Tone                     | Grey/Black   |
| Warp_daN5cm              | 120  |
| Weft_daN5cm              | 100  |



Rullo



Verticali



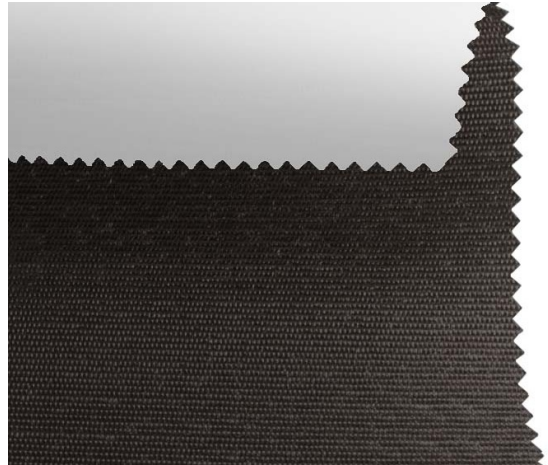
Lucernari

# Blackout CR F.R. / Ref.

CR/258-240

## CHARACTERISTICS

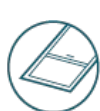
|                          |  |
|--------------------------|--|
| Width cm                 | 240  |
| Thickness                | 0,47   |
| Weight g/m2              | 540  |
| Solar_Reflection         | 5  |
| Solar_Absorption         | 95   |
| Light_Absorption         | 4  |
| GtotInt                  | 0,53   |
| UV_Reduction             | 100  |
| Ref.                     | CR/258-240   |
| Composition              | 48% FV 52% RA  |
| F.R. Classification      | Classe 1 (I), M1 (F), B1 (D), BS (GB), NFPA 701 (US), F2 (F) |
| HealthCertification      | ANTIBACTERIAL, REACH   |
| Transparency             | Blackout   |
| Colour_fastness_to_light | 7/8  |
| Outdoor                  | Outdoor  |
| Sealable                 | With film  |
| adjustable               | Yes  |
| jointed                  | Si   |
| IMO                      | No   |
| Tone                     | Brown  |
| Warp_daN5cm              | 120  |
| Weft_daN5cm              | 100  |



Rullo



Verticali



Lucernari