

## Decoscreen 3 F.R. / Ref.

DS/332



### EIGENSCHAFTEN

Width cm	300
Thickness	0,89
Weight g/m2	480
Openess_Factor	5
Solar_Trasmission	21
Solar_Reflection	57
Solar_Absorption	22
Light_Transmission	17
Light_Absorption	62
GtotInt	0,4
UV_Reduction	80
Ref.	DS/332
Composition	24% PL 76% PVC
F.R. Classification	Classe 1 (I) NFPA 701 (US)
HealthCertification	GREENGUARD
Transparency	Low Transparent
Colour_fastness_to_light	7/8
Outdoor	No
Sealable	Heat
adjustable	No
jointed	No
IMO	IMO
Tone	Natural



Rullo



Panels



# Decoscreen 3 F.R. / Ref. DS/333

## EIGENSCHAFTEN

Width cm	300
Thickness	0,89
Weight g/m2	480
Openess_Factor	5
Solar_Trasmision	16
Solar_Reflection	39
Solar_Absorption	45
Light_Transmission	15
Light_Absorption	44
GtotInt	0,51
UV_Reduction	80
Ref.	DS/333
Composition	24% PL 76% PVC
F.R. Classification	Classe 1 (I) NFPA 701 (US)
HealthCertification	GREENGUARD
Transparency	Low Transparent
Colour_fastness_to_light	7/8
Outdoor	No
Sealable	Heat
adjustable	No
jointed	No
IMO	IMO
Tone	Natural



Rullo



Panels

# Decoscreen 3 F.R. / Ref.

DS/331

## EIGENSCHAFTEN

Width cm	300
Thickness	0,89
Weight g/m2	480
Openess_Factor	5
Solar_Trasmision	23
Solar_Reflection	62
Solar_Absorption	15
Light_Transmission	19
Light_Absorption	65
GtotInt	0,38
UV_Reduction	80
Ref.	DS/331
Composition	24% PL 76% PVC
F.R. Classification	Classe 1 (I) NFPA 701 (US)
HealthCertification	GREENGUARD
Transparency	Low Transparent
Colour_fastness_to_light	7/8
Outdoor	No
Sealable	Heat
adjustable	No
jointed	No
IMO	IMO
Tone	White



Rullo



Panels

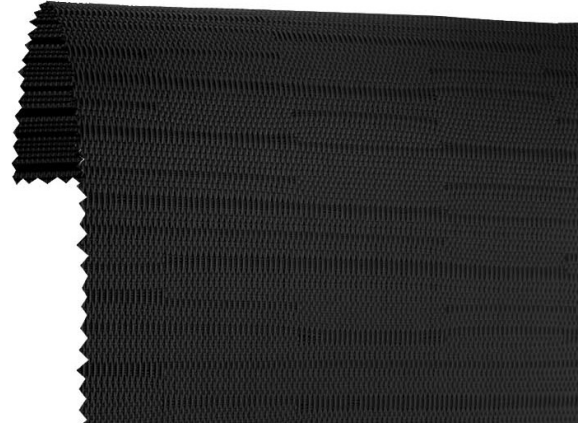


## Decoscreen 3 F.R. / Ref.

DS/336

### EIGENSCHAFTEN

Width cm	300
Thickness	0,89
Weight g/m2	480
Openess_Factor	5
Solar_Trasmision	7
Solar_Reflection	3
Solar_Absorption	90
Light_Transmission	10
Light_Absorption	6
GtotInt	0,71
UV_Reduction	80
Ref.	DS/336
Composition	24% PL 76% PVC
F.R. Classification	Classe 1 (I) NFPA 701 (US)
HealthCertification	GREENGUARD
Transparency	Low Transparent
Colour_fastness_to_light	7/8
Outdoor	No
Sealable	Heat
adjustable	No
jointed	No
IMO	IMO
Tone	Grey/Black



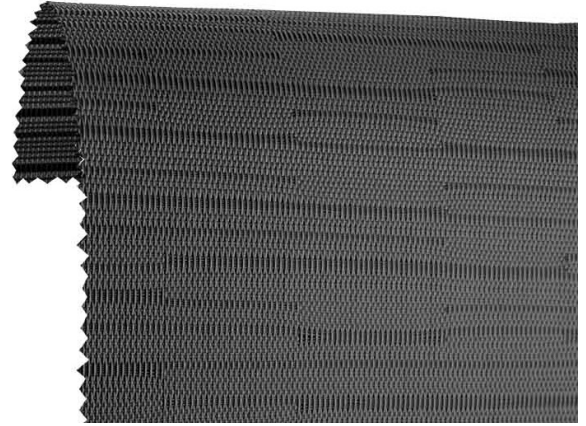
Rullo



Panels



# Decoscreen 3 F.R. / Ref. DS/335



## EIGENSCHAFTEN

Width cm	300
Thickness	0,89
Weight g/m2	480
Openess_Factor	5
Solar_Trasmision	9
Solar_Reflection	5
Solar_Absorption	86
Light_Transmission	10
Light_Absorption	8
GtotInt	0,63
UV_Reduction	80
Ref.	DS/335
Composition	24% PL 76% PVC
F.R. Classification	Classe 1 (I) NFPA 701 (US)
HealthCertification	GREENGUARD
Transparency	Low Transparent
Colour_fastness_to_light	7/8
Outdoor	No
Sealable	Heat
adjustable	No
jointed	No
IMO	IMO
Tone	Grey/Black



Rullo



Panels

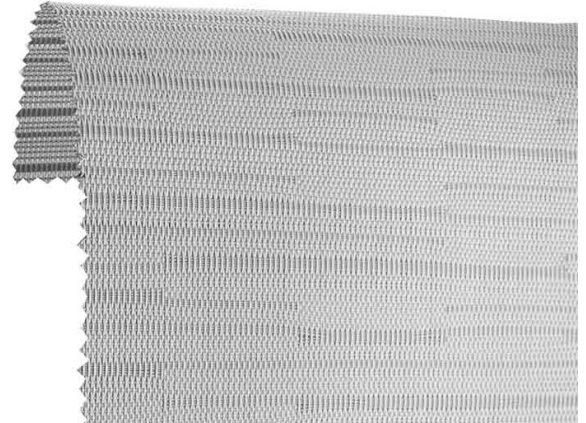


## **Decoscreen 3 F.R. / Ref.**

**DS/334**

### EIGENSCHAFTEN

<b>Width cm</b>	300
<b>Thickness</b>	0,89
<b>Weight g/m2</b>	480
<b>Openess_Factor</b>	5
<b>Solar_Trasmision</b>	16
<b>Solar_Reflection</b>	49
<b>Solar_Absorption</b>	35
<b>Light_Transmission</b>	15
<b>Light_Absorption</b>	53
<b>GtotInt</b>	0,44
<b>UV_Reduction</b>	80
<b>Ref.</b>	DS/334
<b>Composition</b>	24% PL 76% PVC
<b>F.R. Classification</b>	Classe 1 (I) NFPA 701 (US)
<b>HealthCertification</b>	GREENGUARD
<b>Transparency</b>	Low Transparent
<b>Colour_fastness_to_light</b>	7/8
<b>Outdoor</b>	No
<b>Sealable</b>	Heat
<b>adjustable</b>	No
<b>jointed</b>	No
<b>IMO</b>	IMO
<b>Tone</b>	Grey/Black



Rullo



Panels