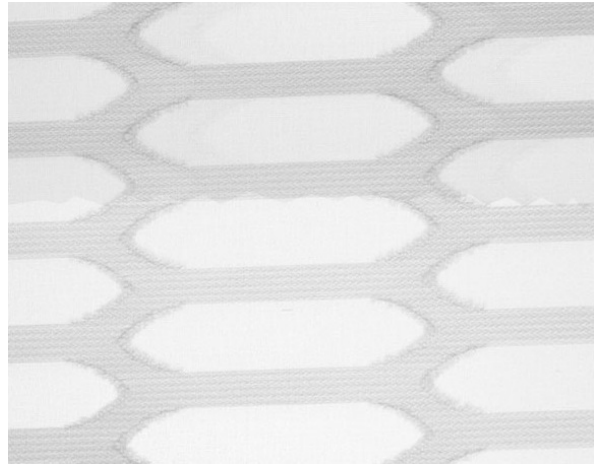


Otto / Ref. OT/001

EIGENSCHAFTEN

| | |
|--------------------------------------|----------------------------------|
| Width cm | 260 |
| Thickness | 0,46 |
| Weight g/m2 | 80 |
| Solar_Trasmission | 47 |
| Solar_Reflection | 50 |
| Solar_Absorption | 3 |
| Light_Transmission | 46 |
| Light_Absorption | 50 |
| GtotInt | 0,46 |
| UV_Reduction | 54 |
| Ref. | OT/001 |
| Composition | 100% PL |
| HealthCertification | OEKO-TEX |
| Transparency | Low Transparent / Transparent |
| Colour_fastness_ to_light | 3/6 |
| Outdoor | No |
| Sealable | No |
| adjustable | No |
| jointed | No |
| IMO | IMO |
| Tone | White |



Rullo

Otto / Ref. OT/002

EIGENSCHAFTEN

| | |
|--------------------------------------|----------------------------------|
| Width cm | 260 |
| Thickness | 0,46 |
| Weight g/m2 | 80 |
| Solar_Trasmission | 47 |
| Solar_Reflection | 46 |
| Solar_Absorption | 7 |
| Light_Transmission | 46 |
| Light_Absorption | 46 |
| GtotInt | 0,47 |
| UV_Reduction | 67 |
| Ref. | OT/002 |
| Composition | 100% PL |
| HealthCertification | OEKO-TEX |
| Transparency | Low Transparent / Transparent |
| Colour_fastness_ to_light | 3/6 |
| Outdoor | No |
| Sealable | No |
| adjustable | No |
| jointed | No |
| IMO | IMO |
| Tone | Natural |

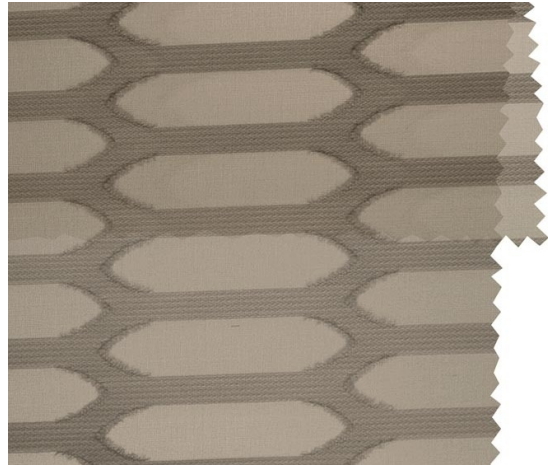


Rullo

Otto / Ref. OT/003

EIGENSCHAFTEN

| | |
|------------------------------|----------------------------------|
| Width cm | 260 |
| Thickness | 0,46 |
| Weight g/m2 | 80 |
| Solar_Trasmission | 34 |
| Solar_Reflection | 32 |
| Solar_Absorption | 34 |
| Light_Transmission | 19 |
| Light_Absorption | 19 |
| GtotInt | 0,53 |
| UV_Reduction | 82 |
| Ref. | OT/003 |
| Composition | 100% PL |
| HealthCertification | OEKO-TEX |
| Transparency | Low Transparent / Transparent |
| Colour_fastness_ to_light | 3/6 |
| Outdoor | No |
| Sealable | No |
| adjustable | No |
| jointed | No |
| IMO | IMO |
| Tone | Brown |

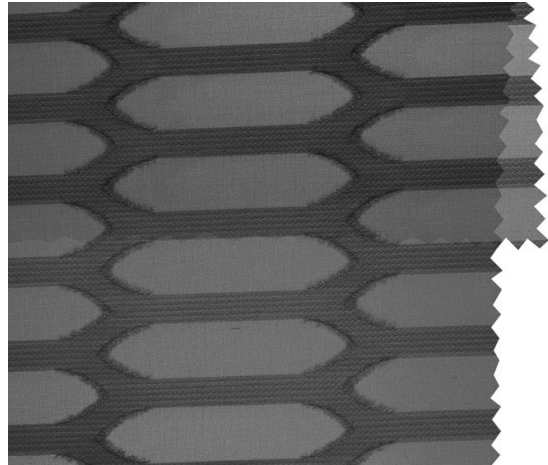


Rullo

Otto / Ref. OT/004

EIGENSCHAFTEN

| | |
|------------------------------|----------------------------------|
| Width cm | 260 |
| Thickness | 0,46 |
| Weight g/m2 | 80 |
| Solar_Trasmision | 35 |
| Solar_Reflection | 27 |
| Solar_Absorption | 38 |
| Light_Transmission | 15 |
| Light_Absorption | 10 |
| GtotInt | 0,55 |
| UV_Reduction | 80 |
| Ref. | OT/004 |
| Composition | 100% PL |
| HealthCertification | OEKO-TEX |
| Transparency | Low Transparent / Transparent |
| Colour_fastness_ to_light | 3/6 |
| Outdoor | No |
| Sealable | No |
| adjustable | No |
| jointed | No |
| IMO | IMO |
| Tone | Grey/Black |



Rullo