

# Tratto F.R. / Ref. TX/3741/06

## RECURSOS

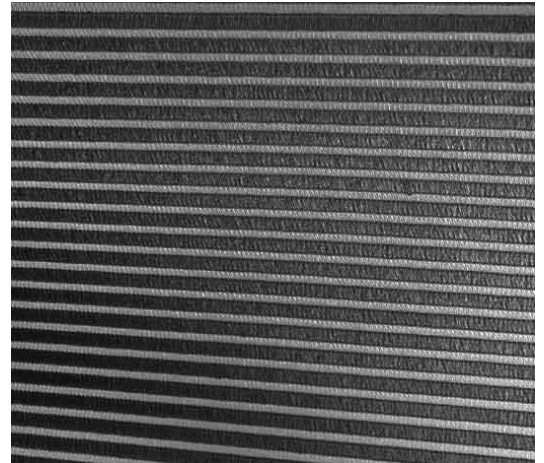
<b>Width cm</b>	300
<b>Thickness</b>	0,34
<b>Weight g/m2</b>	118
<b>Openess_Factor</b>	29
<b>Solar_Trasmission</b>	47
<b>Solar_Reflection</b>	21
<b>Solar_Absorption</b>	32
<b>Light_Transmission</b>	32
<b>Light_Absorption</b>	24
<b>GtotInt</b>	0,51
<b>UV_Reduction</b>	67
<b>Ref.</b>	TX/3741/06
<b>Composition</b>	100% PL Trevira CS
<b>F.R. Classification</b>	Classe 1 (I), M1 (F), B1 (D), BS (GB), NFPA 701 (US), IMO, EN 13773 Class 1 (EU)
<b>HealthCertification</b>	OEKO-TEX, REACH
<b>Transparency</b>	Transparent
<b>Colour_fastness_ to_light</b>	6
<b>Outdoor</b>	No
<b>Sealable</b>	No
<b>adjustable</b>	No
<b>jointed</b>	No
<b>IMO</b>	IMO
<b>Tone</b>	Grey/Black



Rullo



Panels



## OUTRAS CORES

