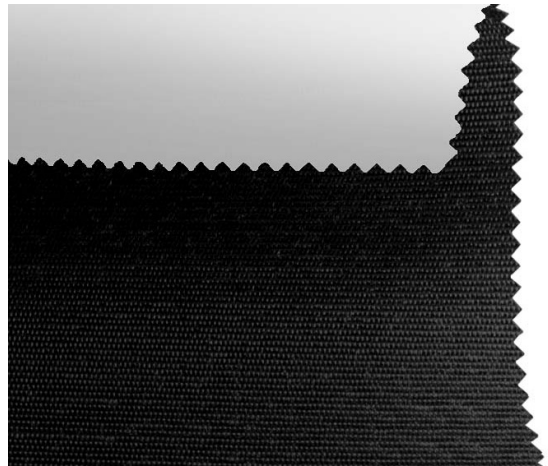


Blackout CR F.R. / Art.

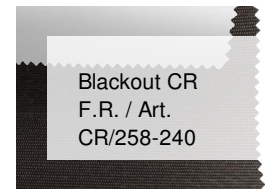
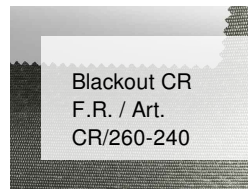
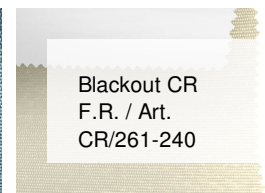
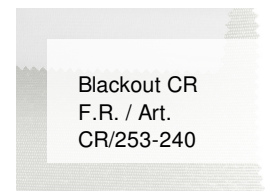
CR/256-240

CARATTERISTICHE

| | |
|----------------------|--|
| Altezza_cm | 240 |
| Spessore | 0,47 |
| Peso_g_mq | 540 |
| Riflessione_Solare | 4 |
| Assorbimento_Solare | 96 |
| Riflessione_Luce | 4 |
| GtotInt | 0,55 |
| Abbattimento_UV | 100 |
| Variante | CR/256-240 |
| Composizione | 48% FV 52% RA |
| Ignifugo | Classe 1 (I), M1 (F), B1 (D), BS (GB), NFPA 701 (US), F2 (F) |
| HealthCertification | ANTIBACTERIAL, REACH |
| Trasparenza | Buio (oscuranti e spalmati) |
| Solidita_colore_luce | 7/8 |
| Outdoor | Outdoor |
| Saldabile | With film |
| Orientabile | Si |
| Giuntabile | Si |
| IMO | No |
| Tonalità | Grigio/Nero |
| Warp_daN5cm | 120 |
| Weft_daN5cm | 100 |



ALTRI COLORI



Rullo



Verticali



Lucernari