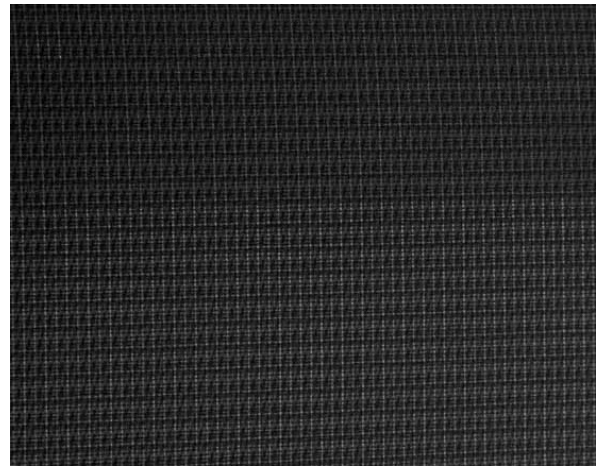


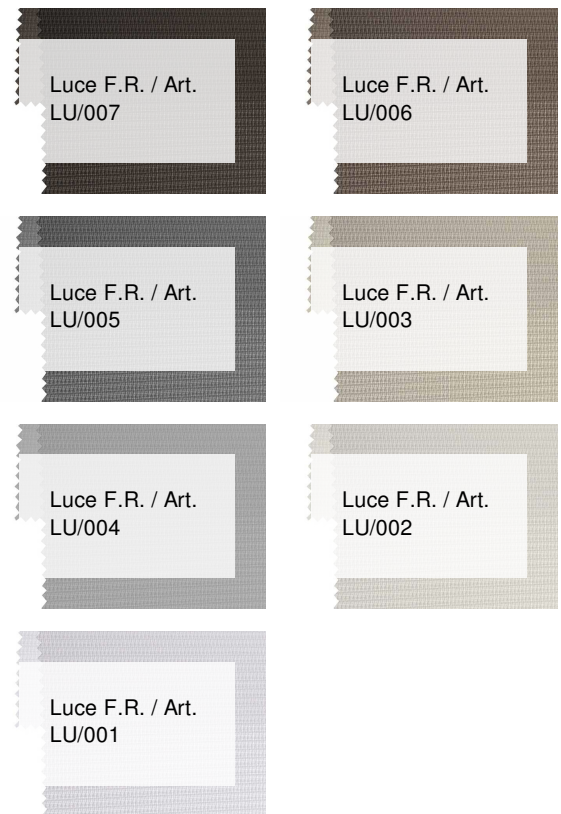
## Luce F.R. / Art. LU/008

### CARACTÉRISTIQUES

Width cm	300
Thickness	0,3
Weight g/m2	150
Openess_Factor	3
Solar_Trasmission	23
Solar_Reflection	26
Solar_Absorption	51
Light_Transmission	3
Light_Absorption	3
GtotInt	0,55
UV_Reduction	96
Ref.	LU/008
Composition	100% PL Trevira CS
F.R. Classification	Classe 1 (I),M1(F),B1(D),BS(GB),NFPA 701(US), EN13772 Class 1(EU)
HealthCertification	OEKO-TEX
Transparency	Low Transparent
Colour_fastness_ to_light	5/6
Outdoor	No
Sealable	No
adjustable	No
jointed	No
IMO	IMO
Tone	Grey/Black



### AUTRES COLORIS



Rullo



Verticali



Panels