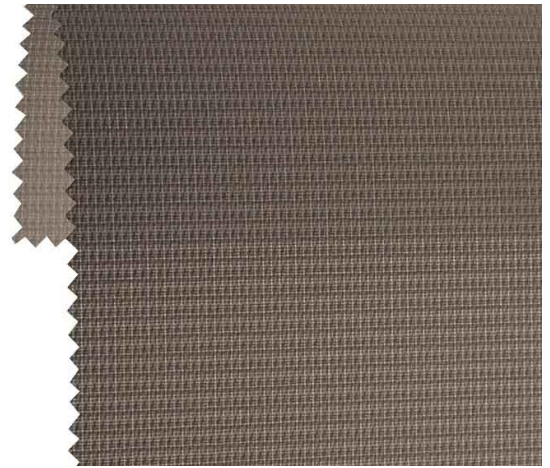


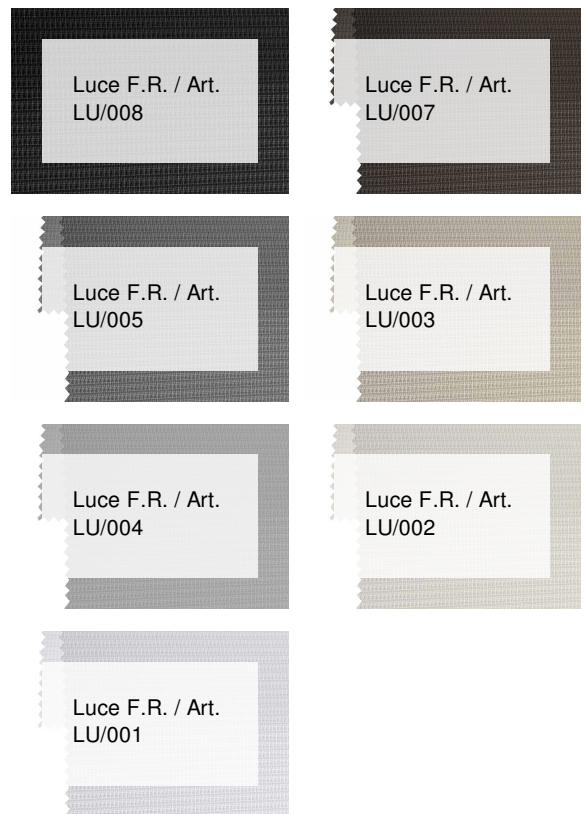
## Luce F.R. / Art. LU/006

### CARACTÉRISTIQUES

Width cm	300
Thickness	0,3
Weight g/m2	150
Openess_Factor	3
Solar_Trasmission	29
Solar_Reflection	31
Solar_Absorption	40
Light_Transmission	9
Light_Absorption	13
GtotInt	0,53
UV_Reduction	94
Ref.	LU/006
Composition	100% PL Trevira CS
F.R. Classification	Classe 1 (I),M1(F),B1(D),BS(GB),NFPA 701(US), EN13772 Class 1(EU)
HealthCertification	OEKO-TEX
Transparency	Low Transparent
Colour_fastness_ to_light	5/6
Outdoor	No
Sealable	No
adjustable	No
jointed	No
IMO	IMO
Tone	Brown



### AUTRES COLORIS



Rullo



Verticali



Panels