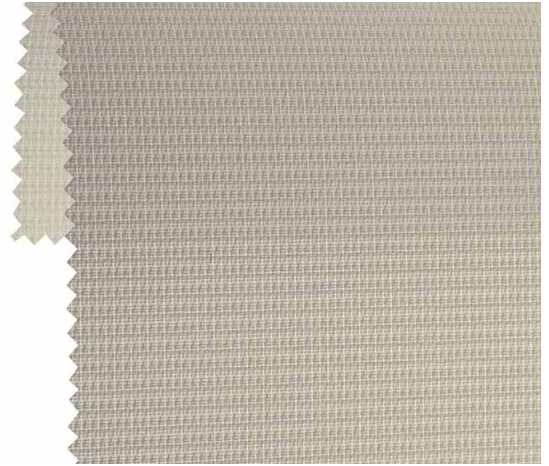


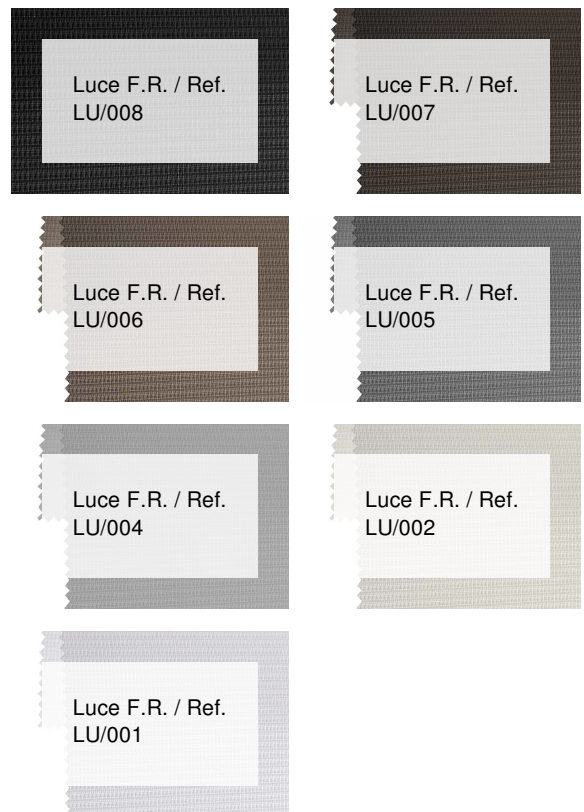
Luce F.R. / Ref. LU/003

CHARACTERISTICS

| | |
|------------------------------|--|
| Width cm | 300 |
| Thickness | 0,3 |
| Weight g/m2 | 150 |
| Openess_Factor | 6 |
| Solar_Trasmission | 37 |
| Solar_Reflection | 49 |
| Solar_Absorption | 14 |
| Light_Transmission | 34 |
| Light_Absorption | 50 |
| GtotInt | 0,45 |
| UV_Reduction | 87 |
| Ref. | LU/003 |
| Composition | 100% PL Trevira CS |
| F.R. Classification | Classe 1 (I),M1(F),B1(D),BS(GB),NFPA 701(US), EN13772 Class 1(EU) |
| HealthCertification | OEKO-TEX |
| Transparency | Low Transparent |
| Colour_fastness_ to_light | 5/6 |
| Outdoor | No |
| Sealable | No |
| adjustable | No |
| jointed | No |
| IMO | IMO |
| Tone | Beige |



OTHER COLORS



Rullo



Verticali



Panels