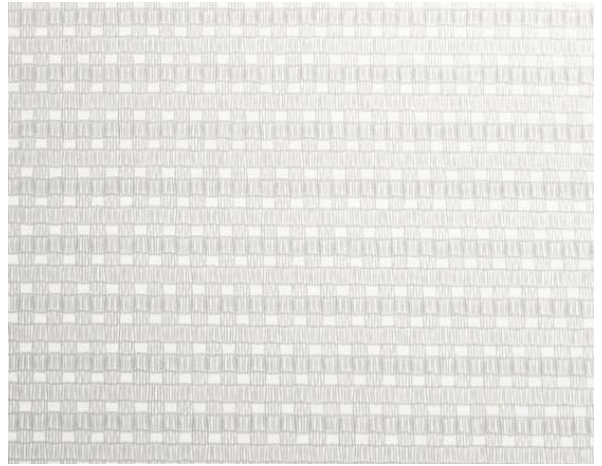


Linea F.R. / Ref. LN/101

CHARACTERISTICS

| | |
|---------------------------------|---------------------------------------------------------|
| Width cm | 300 |
| Thickness | 0,4 |
| Weight g/m2 | 145 |
| Openess_Factor | 19 |
| Solar_Trasmission | 51 |
| Solar_Reflection | 46 |
| Solar_Absorption | 3 |
| Light_Transmission | 51 |
| Light_Absorption | 47 |
| GtotInt | 0,45 |
| UV_Reduction | 65 |
| Ref. | LN/101 |
| Composition | 100% PL Trevira CS |
| F.R. Classification | Classe 1 (I), B1 (D), BS (GB), IMO, EN13773 Class 1(EU) |
| HealthCertification | OEKO-TEX, REACH |
| Transparency | Transparent |
| Colour_fastness_to_light | 5/7 |
| Outdoor | No |
| Sealable | No |
| adjustable | No |
| jointed | No |
| IMO | IMO |
| Tone | White |



Rullo



Panels