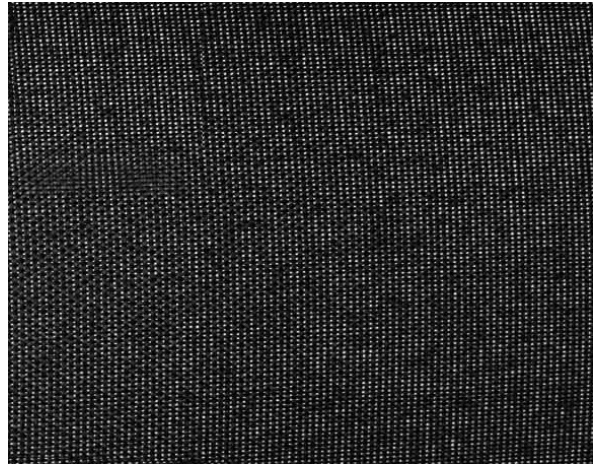


StarScreen F.R. / Ref. ST/106

EIGENSCHAFTEN

| | |
|--------------------------|---|
| Width cm | 325 |
| Thickness | 0,52 |
| Weight g/m2 | 220 |
| Openess_Factor | 3,5 |
| Solar_Trasmission | 4 |
| Solar_Reflection | 3 |
| Solar_Absorption | 94 |
| Light_Transmission | 4 |
| GtotInt | 0,54 |
| GtotExt | 0,04 |
| Ref. | ST/106 |
| Composition | 100% PET FR |
| F.R. Classification | Classe 1 (I) ,B1(D),M1(F),NFPA 701-2010 test 1 small scale (US) |
| HealthCertification | WATER REPELLENT |
| Transparency | Low Transparent |
| Colour_fastness_to_light | 7/8 |
| Outdoor | Outdoor |
| Sealable | With film |
| adjustable | Yes |
| jointed | Si |
| IMO | IMO |
| Tone | Grey/Black |
| Warp_daN5cm | 1200 (UNI EN ISO 13934-1) |
| Weft_daN5cm | 920 (UNI EN ISO13934-1) |



ANDERE FARBEN



Rullo