

Blackout TR F.R. / Ref.

TR/522

EIGENSCHAFTEN

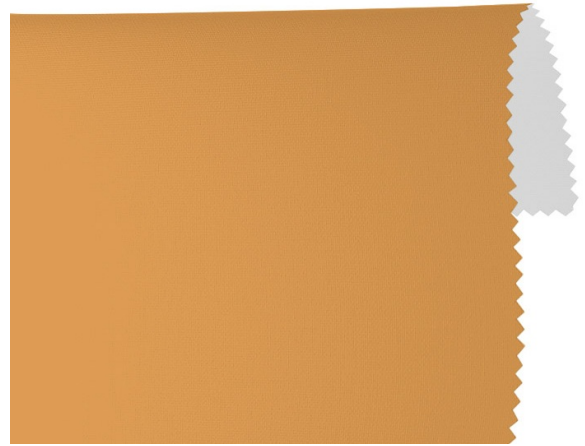
Width cm	240
Thickness	0,38
Weight g/m2	340
Solar_Reflection	69
Solar_Absorption	31
Light_Absorption	82
GtotInt	0,34
UV_Reduction	100
Ref.	TR/522
Composition	35% PL 65% RA
F.R. Classification	Classe 1 (I), M1 (F), B1 (D)
HealthCertification	OEKO-TEX
Transparency	Blackout
Colour_fastness_to_light	5/6
Outdoor	No
Sealable	Heat
adjustable	No
jointed	No
IMO	No
Tone	Orange



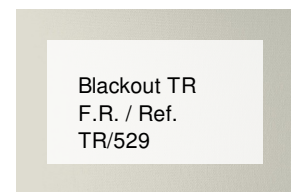
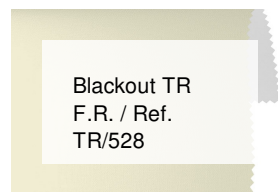
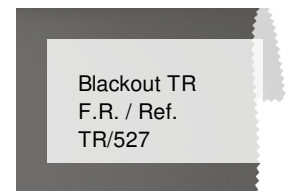
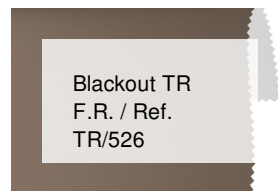
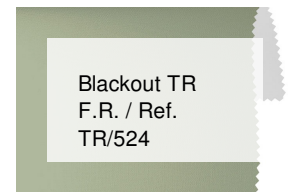
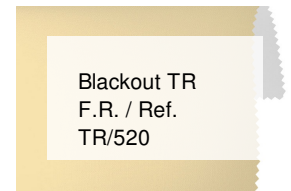
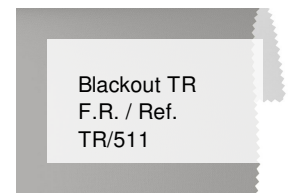
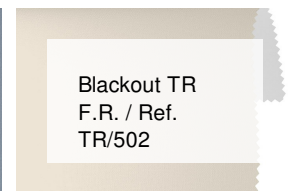
Rullo



Lucernari



ANDERE FARBEN



Blackout TR
F.R. / Ref.
TR/530

Blackout TR
F.R. / Ref.
TR/531

Blackout TR
F.R. / Ref.
TR/501